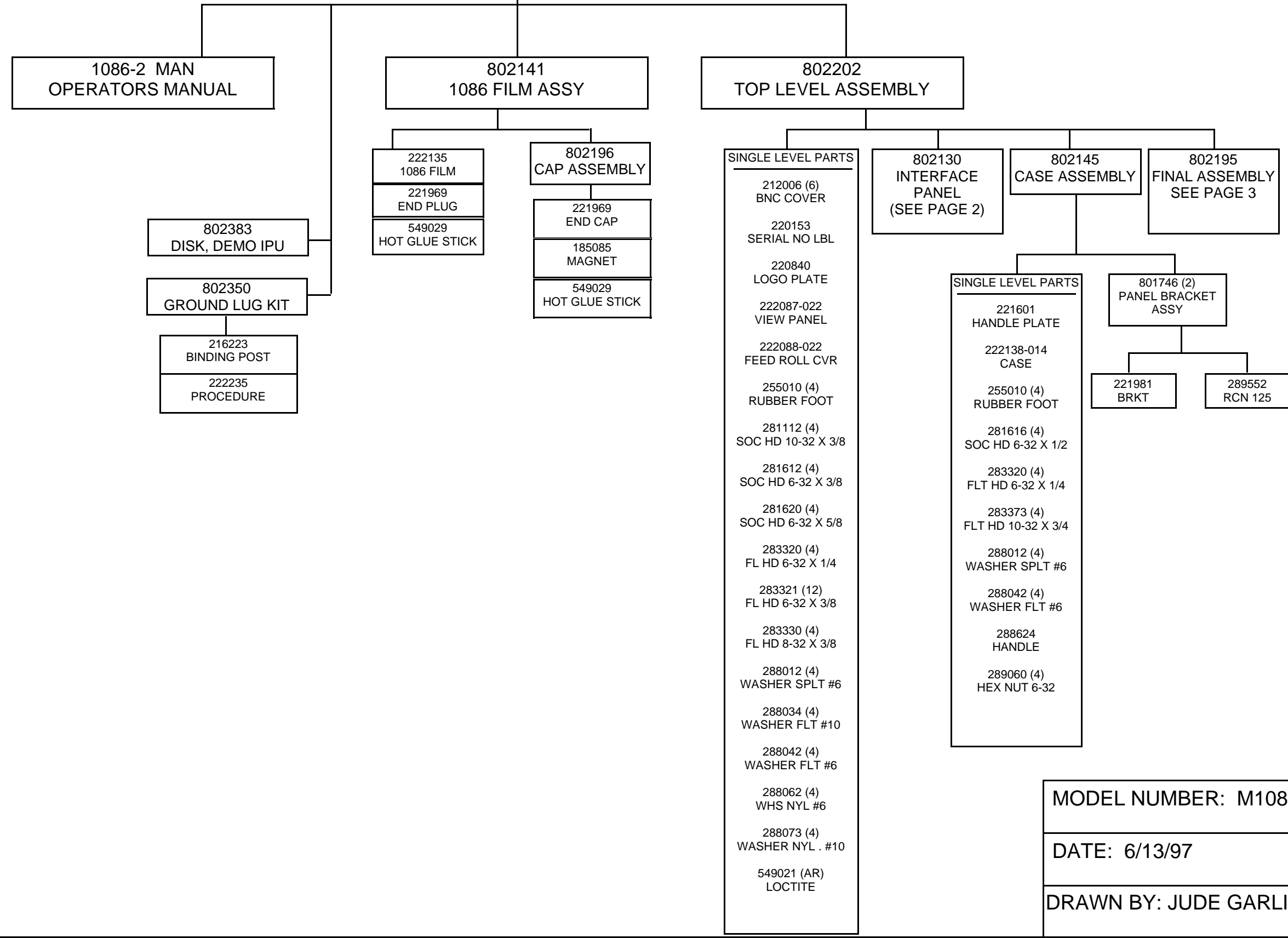


M1086-2-STD (KYOCERA)
SYSTEM LEVEL



MISCELLANEOUS INFORMATION

DEPOT SPARES	802237
SMALL SPARES	802227
UPGRADE 1086-0 TO 1086-2	802301
RACK MOUNT KIT	802295
FLASH MEMORY UPGRADE	802239
SHOP MANUAL	802228
TRANSPORT CASE	141029
SCHEMATICS	
MOTOR DRIVE BOARD (802182)	900XXX (TBD)
CONTROL BOARD ASSY (802221)	900472
ANALOG PARALLEL I/O BOARD (802224)	900478
P-HEAD RETRO-FIT PROCEDURE, RICOH TO KYOCERA	802335

MODEL NUMBER: M1086-2-STD	
DATE: 6/13/97	REV: H
DRAWN BY: JUDE GARLINGTON	PAGE: 1 OF6

802130
INTERFACE PANEL

SINGLE LEVEL PARTS

211001
CONN 9 PIN

211002
CONN 9 SOC

211051 (6)
BNC CONN

211210
CONN MTA 4 PIN

214001 (9)
MALE CONTACT

214002 (9)
FEMALE CONTACT

220301 (4)
STANDOFF M/F

222131-OVR
CONN PLATE

242007 (2)
KNOB

242009(2)
10 TURN KNOB

281412 (2)
SOC HD 4-40 X 3/8

281612 (4)
SOC HD 6-32 X 3/8

288011 (2)
WASHER SPLIT #4

288012 (4)
WASHER SPLIT #6

288031 (4)
WASHER FLAT SM #4

288042 (4)
WASHER FLT #6

288524
CABLE TIE HOLDER

288567 (6)
SOLDER LUG

288607 (AR)
CABLE TIE

289050 (2)
HEX NUT #4

472015-020 (2)
POT 20K, 10 TURN

472064 (2)
POT 10K

SINGLE LEVEL PARTS

511002 (2)
SWITCH

515034
FUSE 3 AMP

549022 (AR)
RTV

621409 (AR)
24 AWG WHT

621410 (AR)
24 AWG BLK

641410 (AR)
24 AWG TW BLK/WHT

802027
KEY BOARD CBL

SINGLE LEVEL PARTS

211193
5 PIN CIRCULAR CONN

211194
HEADER CONN 5 PIN

214034 (5)
CONTACT JST

313002 (AR)
HEAT SHRINK

621409 (AR)
24 AWG WHT

802028
PARALLEL I/O CABLE

SINGLE LEVEL PARTS

211005
CONN 25 PIN

211079
HEADER CONN 26 PIN

214019 (25)
HEADER CONTACTS

288607 (AR)
CABLE TIE

621409 (AR)
24 AWG WHT

621410 (AR)
24 AWG BLK

802029
LINE INPUT
MODULE

SINGLE LEVEL PARTS

216222 (9)
CRIMP LUG

270013
CORCOM LINE FILTER

515034
FUSE 3 AMP NORMAL

626101(AR)
18 AWG GRN/YEL

626109 (AR)
18 AWG WHT

626110 (AR)
18 AWG BLK

802217
FAN ASSY

SINGLE LEVEL PARTS

211094
CONN LED

261016
FAN 3.25

641408 (AR)
24 AWG TW GRY/WHT

802192
CABLE ASSY

211105
HEADER 40 PIN

214019 (24)
CONTACT

621409 (AR)
24 AWG WHT

641410 (AR)
24 AWG TW BLK/ WHT

MODEL NUMBER: M1086-2-STD

DATE: 6/13/97

REV: H

DRAWN BY: JUDE GARLINGTON

PAGE: 2 OF6

**802195
FINAL ASSEMBLY**

- SINGLE LEVEL PARTS**
- 171051 PASSIVE BACK PLANE
 - 222146 COVER PLATE PS
 - 222151 PRINTHEAD KYOCERA
 - 281112 (2) SOC HD 10-32 X 3/8
 - 281408 (2) SOC HD 4-40 X 1/4
 - 281412 (9) SOC HD 4-40 X 3/8
 - 281608 (7) SOC HD 6-32 X 1/4
 - 281612 (6) SOC HD 6-32 X 3/8
 - 281812 (2) SOC HD 8-32 X 3/8
 - 283216 (2) PAN HD 2-56 X 1/2
 - 283392 (4) PAN HD SLOTTED
 - 288011 (8) WASHER SPLIT #4
 - 288012 (9) WASHER SPLIT #6
 - 288034 (2) WASHER FLT #10
 - 288041 (6) WHS FLT #4
 - 288042 (9) WASHER FLT #6
 - 288073 (2) WHS NYL .05 #10
 - 350011 CHART DRIVE
 - 401000 POWER SUPPLY
 - 549021 (AR) LOCTITE
 - 610003 POWERCABLE

**802037
RESET CABLE
ASSY**

- SINGLE LEVEL PARTS**
- 211094 (2) CONN LED
 - 641408 24 AWG TW GRY/WHT

**802039
DIGITAL I/O
BOARD**

- SINGLE LEVEL PARTS**
- 171052 DIGITAL I/O BOARD
 - 473017 (12) 10K RES ARRAY

**802210
POWER CABLE
BACKPLANE**

- SINGLE LEVEL PARTS**
- 211176 MOLEX CONN 6 SOC
 - 214025 (6) FEMALE CONTACT
 - 216026 (5) CRIMP LUG #8
 - 626105 (AR) 18 AWG BROWN
 - 626106 (AR) 18 AWG BLUE
 - 626109 (AR) 18 AWG WHT
 - 626110 (AR) 18AWG BLK

**802211
POWER CABLE
MOTOR DRIVE**

- SINGLE LEVEL PARTS**
- 211176 MOLEX CONN 6 SOC
 - 214025 (6) FEMAL CONTACT
 - 216026 CRIMP LUG #8
 - 216031 CRIMP LUG
 - 626105 (AR) 18 AWG BRWN
 - 626106 (AR) 18 AWG BLUE
 - 626109 (AR) 18 AWG WHT
 - 626110 (AR) 18AWG BLK

**802224
INTERFACE BRD
(SEE PAGE 4)**

**802221
CONTROL BRD ASSY
(SEE PAGE 4)**

**802213
MAIN FRAME ASSY
(SEE PAGE 5)**

**802182
MOTOR DRIVE
BOARD**

- SINGLE LEVEL PARTS**
- 151064 CAP .1UF
 - 151083 CAP 1.0 UF
 - 151085 CAP 2.2UF
 - 151131 CAP 11,000UF
 - 211045 MOLEX CONN 4 SOC
 - 211144 HEADER CONN 50 PIN
 - 211172 (2) MOLEX CONN 6 PIN
 - 211182 HEADER CONN 14 PIN
 - 211203 (2) CONN HEADER 14 PIN
 - 211206 (5) CONN HEADER 2 PIN
 - 211207 CONN HEADER 3 PIN
 - 211208 (2) CONN HEADER 4 PIN
 - 211211 CON HEADER 8 PIN
 - 215042 SOCKET 16 PIN
 - 215053 SOCKET 24 PIN
 - 232826 OSC 60 kHz
 - 288014 (4) WASHER SPLIT #8
 - 400020 VOLTAGE REG -5
 - 450004 RELAY
 - 471016 (3) RES 1K OHM 1/8W
 - 471032 (2) RES 10K OHM 1/8W
 - 471115 RES 390 OHM 1/2W
 - 472060 (2)

- SINGLE LEVEL PARTS**
- 472060(2) POT 10K
 - 480320 TRANSISTOR
 - 481501 TRANSI -PAD
 - 482222 TRANSISTOR
 - 621210 (AR) 20 AWG BLK
 - 626110 (AR) 18 AWG BLK
 - 641208 (AR) 20 AWG TW GRY/WHT
 - 660006 (AR) 24 AWG BUSS WIRE
 - 700112 PC BOARD

**802183
CHART PAL**

**203610
PAL**

**802190
PRINTHEAD
POWER CABLE**

- SINGLE LEVEL PARTS**
- 211138 HEADER CONN 14 PIN
 - 211218 CONN JAE 13 SOC
 - 214019 (14) HEADER CONTACT
 - 214027 (13) CONTACT
 - 216026 CRIMP LUG #8
 - 621309 (AR) 22 AWG WHT
 - 621310 (AR) 22 AWG BLK

**802191
PRINTHEAD CABLE**

- SINGLE LEVEL PARTS**
- 211079 HEADER CONN 26 PIN
 - 211217 CONN JAE 10 PINS
 - 214019 (12) HEADER CONTACTS
 - 214027 (10) CONTACT
 - 288607 (AR) CABLE TIE
 - 621409 (AR) 24 AWG WT
 - 641408 (AR) 24 AWG TW/PR GRY/WHT

**802219 (2)
RIBBON CABLE DIG I/O**

- SINGLE LEVEL PARTS**
- 211220 (2) HEADER CONN 50 PIN
 - 610017 (AR) WIRE 60 RIBBON

**802209
CHART MOD CABLE**

- SINGLE LEVEL PARTS**
- 211212 CONN 8 PIN
 - 621209 (AR) 20 AWG WHITE
 - 621210 (AR) 20 AWG BLACK

**802205
5V CABLE ASSY**

- SINGLE LEVEL PARTS**
- 211094 CONN LED
 - 216026 CRIMP LUG #8
 - 313002 (AR) HEAT SHRINK
 - 641208 (AR) 20 AWG TW GRY/WHT

**802231
CPU BOARD, UNV.**

- SINGLE LEVEL PARTS**
- 171055 MICRO BOARD

**802232
PROGRAM**

- SINGLE LEVEL PARTS**
- 202040 FLASH MEMORY

**802207
CONTROL PANEL AY**

- SINGLE LEVEL PARTS**
- 216210 SPRING SHUNT
 - 216217 (8) SPACER
 - 222080 PANEL
 - 222098 (2) MOUNTING BRACKET
 - 281208 (8) SOC HD 2-56 X 1/4
 - 288010 (8) WASHER SPLIT #2
 - 288212 (4) WASHER SPLIT #6
 - 288042 (4) WSHR FLAT STD #6
 - 289060 (4) HEX NUT 6-32 X 5/16

**802208 (2)
LCD ASSY**

- SINGLE LEVEL PARTS**
- 211094 CONN LED
 - 211204 CONN 14 PIN
 - 214019 (14) HEADER CONTACT
 - 245506 LCD
 - 288607 (AR) CABLE TIE
 - 621409 (AR) 24 AWG WHT
 - 621410 (AR) 24 AWG BLK
 - 641410 24 AWG TW BLK/ WHT

**802194
P-HEAD ERROR CABLE**

- 211210 CONN 4 PIN MTA
- 211219 CONN OPTIC SENSOR
- 288607 (AR) CABLE TIE
- 313001 (AR) HEAT SHRINK
- 513008 MICRO SWITCH
- 621409 (AR) 24 AWG WHITE
- 621410 (AR) 24 AWG BLACK
- 641410 (AR) 24 AWG TW BLK/WHT

MODEL NUMBER: M1086-2-STD

DATE: 6/13/97

REV: H

DRAWN BY: JUDE GARLINGTON

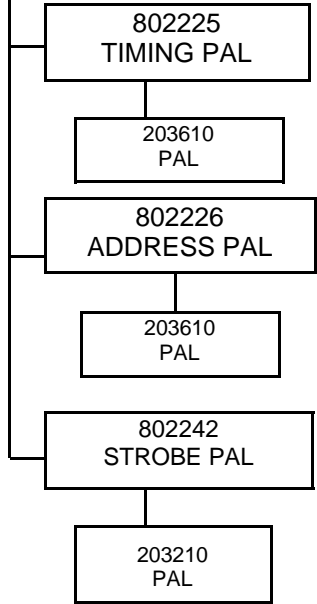
PAGE: 3 OF 6

802195
FINAL ASSEMBLY (CON'T)

802224
INTERFACE BOARD

- SINGLE LEVEL PARTS
- 151031 (13)
CAP 47 PF
 - 151060 (17)
CAP .047UF
 - 151092 (2)
CAP 10UF
 - 200153 (2)
IC A/D CONV
 - 201254 (3)
IC
 - 201255
IC
 - 202429 (2)
IC FIFO
 - 211148
HEADER BRK AWAY
 - 211160
CONN HEADER 40 PIN
 - 211163
CONN HEADER 26 PIN
 - 215022 (4)
SOCKET 8 PIN
 - 215042
SOCKET 16 PIN
 - 215043 (3)
SOCKET 24 PIN W
 - 215050
SOCKET 40 PIN W
 - 215051 (7)
SOCKET 20 PIN
 - 215053 (3)
SOCKET 24 PIN
 - 215059 (2)
SOCKET 28 PIN
 - 216210
SPRING SHUNT
 - 222090
SUPPORT BRKT

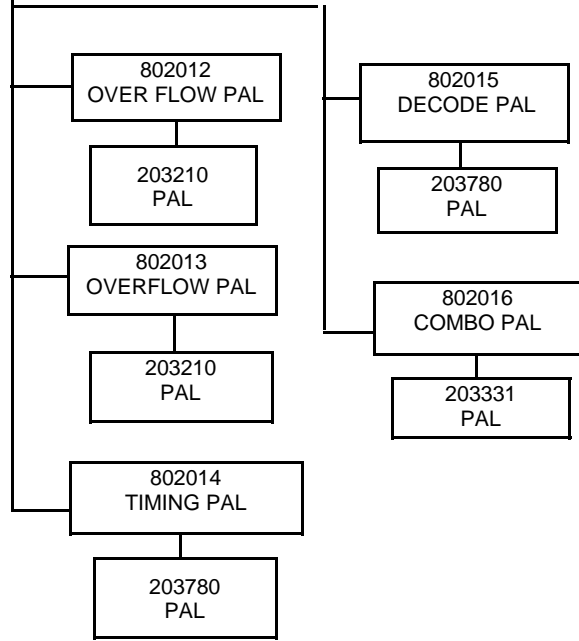
- SINGLE LEVEL PARTS
- 232825
OSC 8 MHZ
 - 281412
SOC HD 4-40 X 3/8
 - 288011
WASHER SPLIT #4
 - 288050 (2)
WASHER NYL #4
 - 384245 (2)
IC 74LS245
 - 384257
IC 74HC257
 - 384541 (3)
IC
 - 391458 (4)
OP AMP
 - 471003 (5)
RES 47 OHM 1/8W
 - 471012
RES 470 OHM 1/8W
 - 471019 (4)
RES 2.4 K OHM 1/8W
 - 471025
RES 4.7K OHM 1/8W
 - 471032 (15)
RES 10K OHM 1/8W
 - 471055 (2)
RES 100K OHM 1/8W
 - 471058 (2)
RES 330K OHM 1/8W
 - 471102
RES 100 OHMS 1/2W
 - 473031 (6)
RES NET 4.7K 10 PIN
 - 480752 (2)
DIODE IN752A
 - 480914 (6)
DIODE IN914B
 - 700111
PC BOARD



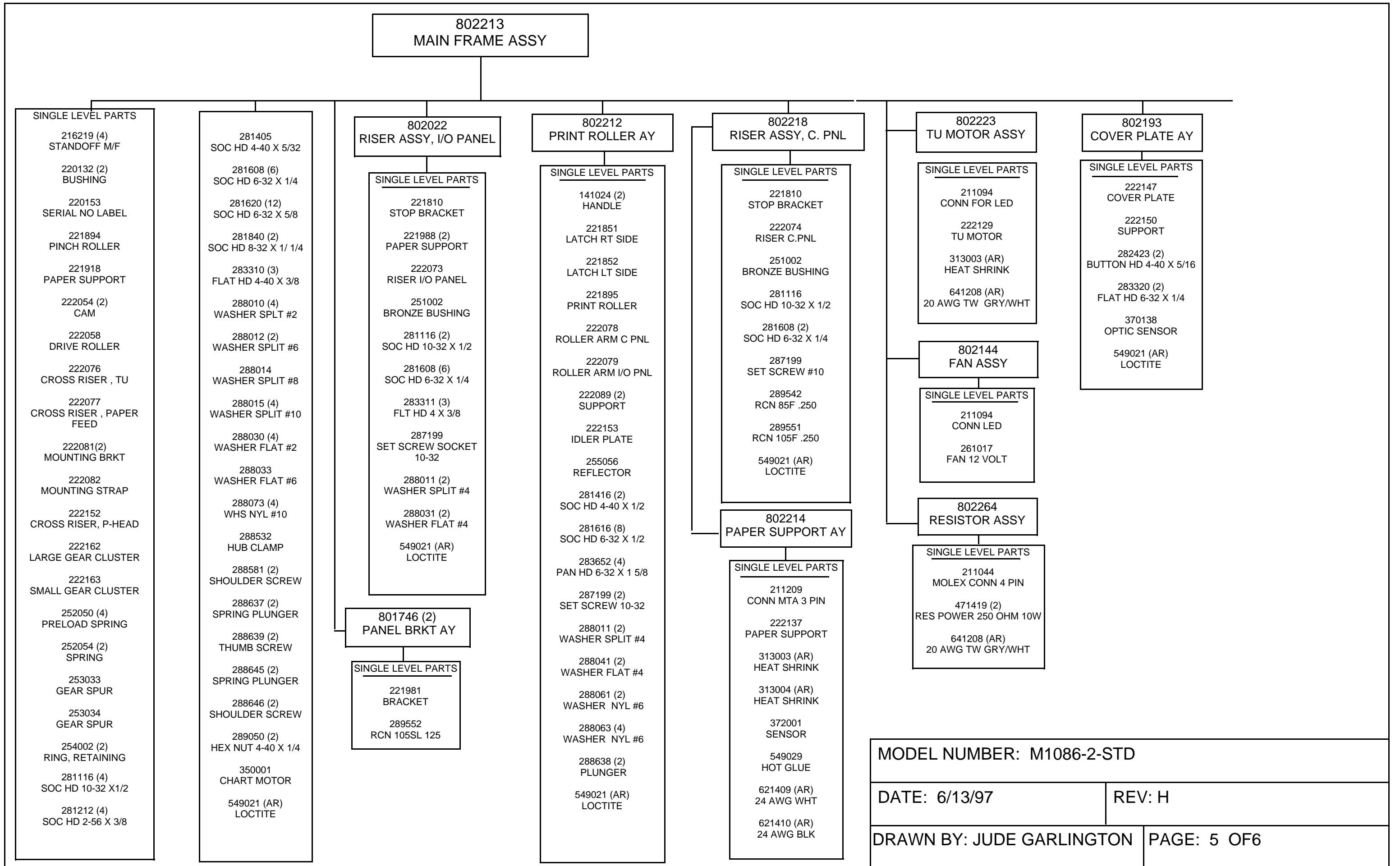
802221
CONTROL BOARD

- SINGLE LEVEL PARTS
- 151028 (45)
CAP .01 UF
 - 151089 (5)
CAP 6.8UF
 - 200828
ADC 8 BIT W/8 INPUTS
 - 201254
PRGRMMBL TMR
 - 202120 (2)
7C128A
 - 211121
HEADER CONN 26 PIN
 - 211148
HDDR BRK AWY
 - 211189
HEADER CONN 10 PIN
 - 215042 (7)
SOCKET 16 PIN
 - 215043
CONN 24 PIN W
 - 215046 (2)
SOCKET 14 PIN
 - 215051 (17)
SOCKET 20 PIN
 - 215052
SOCKET 28 PIN W
 - 215053 (6)
SOCKET 24 PIN
 - 215059
SOCKET 28 PIN
 - 215069 (2)
SOCKET 84 PIN
 - 216210 (5)
SPRING SHUNT
 - 222090
BRACKET
 - 232824
OSC 33MHZ
 - 281408
SOC HD 4-40 X 1/4

- SINGLE LEVEL PARTS
- 288011
WASHER SPLIT #4
 - 288050 (2)
WASHER NYL #4
 - 364138 (2)
IC 74F138
 - 364432
IC 74F32
 - 364538
IC 74F538
 - 384244 (3)
IC 74LS244
 - 384245 (4)
IC 74LS245
 - 384273
IC 74LS273
 - 384374 (3)
IC
 - 384652 (2)
IC 74LSTTL
 - 385244 (5)
IC 74F244
 - 387283 (4)
IC74LS283
 - 387404
IC
 - 387585
IC 74LS85
 - 471043
RES 30K OHM 1/8W
 - 471216
RES 1 OHMS 1/4 W
 - 473016 (2)
RES ARRAY 1K 10 PIN
 - 473031 (3)
RES NETWORK 4.7K
 - 700106
CONTROL BOARD



MODEL NUMBER: M1086-2-STD	
DATE: 6/13/97	REV: H
DRAWN BY: JUDE GARLINGTON	PAGE: 4 OF6



REV	DESCRIPTION	ECO
A	ELIMINATED VIDEO CABLES 802215 + 802216 FROM I/O PANEL	1409
B	CHANGED 214019 PIN COUNT IN 802191 CABLE	1415
C	CHANGED 283312 TO 283310 IN MAIN FRAME TO ACCOMMODATE THE TU MOTOR SHAFT	1425
D	ADDED 802350 GROUND LUG KIT FOR SOLID GROUND CONNECTION IN FIELD	1435
E	ADDED 802383 DEMO DISK, IPU	1443
F	REDUCED QTY OF 288010 FROM 16 TO 8 ON 802207	1456
G	CHANGED 641208 TO 641410 ON 802208	1457
H	CHANGED 641208 TO 641410 AND LENGTHENED CABLE ON 802192	1464

MODEL NUMBER: M1086-2-STD	
DATE: 6/13/97	REV: H
DRAWN BY: JUDE GARLINGTON	PAGE: 6 OF6