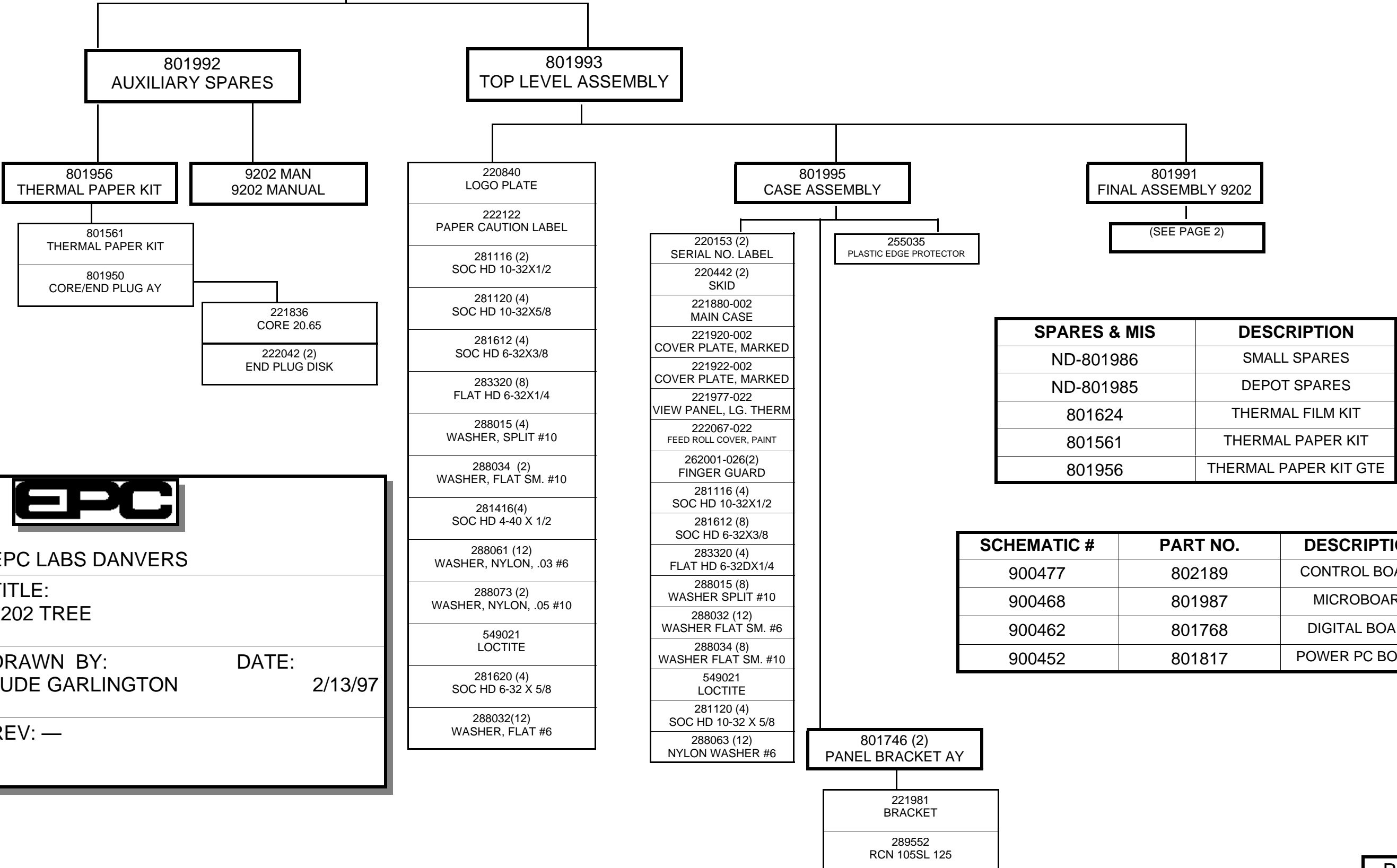


MODEL 9202

2/13/97



EPC

EPC LABS DANVERS

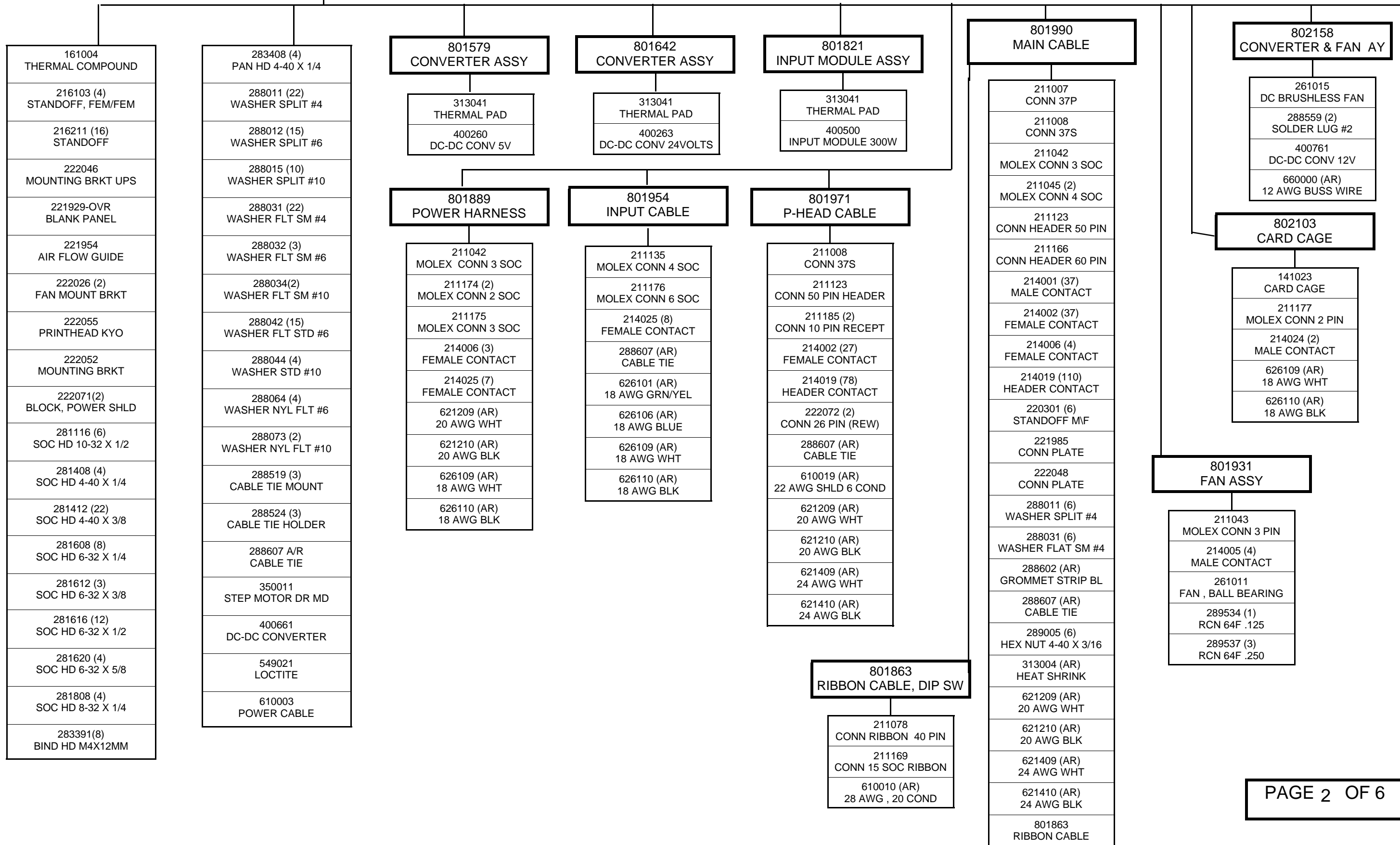
TITLE:
9202 TREE

DRAWN BY: JUDE GARLINGTON DATE: 2/13/97

REV: —

FINAL ASSEMBLY 801991

9202



801991
FINAL ASSY (CONT)

9202

801893
CONTROL PANEL AY

- 211042 MOLEX CONN 3 SOC
- 211134 MOLEX CONN 4 PIN
- 214006 (2) FEMALE CONTACT
- 214024 (4) MALE CONTACT
- 222041-OVR PANEL
- 242007 (2) KNOB
- 246513 (2) IND LAMP, WHT
- 246514 (3) IND LAMP, RED 6V
- 246515 IND LAMP, WHT 24V
- 281406 (2) SOC HD 4-40 X 3/16
- 288011 (2) WASHER SPLIT #4
- 288041 (2) WASHER FLAT #4
- 288524 CABLE TIE HOLDER
- 288564 SOLDER LUG #4
- 288607 (AR) CABLE TIE
- 471137 RES 2.0K OHM AT 1/2W
- 472062 1K POT
- 512035 SWITCH, ROTARY
- 516516 (3) SWITCH
- 516518 (3) SWITCH
- 516525 SWITCH, POWER
- 516526 SWITCH
- 621209 (AR) 20 AWG WHT
- 621210 (AR) 20 AWG BLK
- 626109 (AR) 18 AWG WHT
- 626110 (AR) 18 AWG BLK

801939
CABLE ASSY

- 211007 CONN 37 PIN
- 212004 HOUSING
- 213004 SCREW LOCK
- 214001 (37) MALE CONTACT
- 288564 SOLDER LUG #4
- 621209 (AR) 20 AWG WHT
- 621210 (AR) 20 AWG BLK
- 621409 (AR) 24 AWG WHT
- 621410 (AR) 24 AWG BLK

801584
AUDIO ALARM BD

- 151028 CAP .01UF
- 151083 CAP 1.0UF
- 216070 (5) TURRET
- 246022 BUZZER
- 384000 IC HC7400
- 473018 RES ARRAY 10K
- 480914 (3) DIODE
- 700089 PC BOARD

801905
I/O CABLE ASSY

- 211105 CONN HEADER 40 PIN
- 211184 CONN, CIRC 41 SOC
- 214019 (40) HEADER CONTACT

801994
I/O CONN PLATE

- 211135 MOLEX CONN 4 SOC
- 211175 MOLEX CONN 3 SOC
- 214025 (8) FEMALE CONTACT
- 216200 BINDING POST
- 222040-OVR CONN PLATE
- 270012 LINE FILTER
- 281408 (2) SOC HD 4-40 X 1/4
- 288011 (2) WASHER SPLIT #4
- 288031 (2) WASHER FLAT #4
- 288100 LG WASHER
- 288566 SOLDER LUG #8
- 515034 FUSE 3AMP
- 621409 (AR) 24 AWG WHT
- 621410 (AR) 24 AWG BLK
- 626105 (AR) 18 AWG BROWN
- 626109 (AR) 18 AWG WHT
- 626110 (AR) 18 AWG BLK

801976
DIP SWITCH PC

- 216070 (9) TURRET
- 516506 DIP SWITCH
- 700104 PC BD

801891
POWER INPUT PC

- 151130 CAP 1000UF
- 211147 MOLEX CONN 4 PIN
- 211173 MOLEX CONN 3 PIN
- 215057 (7) SOCKET
- 215058 (2) SOCKET
- 700103 PC BD

801953
TU MOTOR

- 151086 CAP 1MF
- 211044 MOLEX CONN 4 PIN
- 214005 (2) MALE CONTACT
- 222044 ADAPTER PLATE
- 222047 MOTOR
- 293312 (3) FLAT HD 4-40 X 1/2
- 288563 SOLDER LUG #10
- 288607 CABLE TIE
- 313004 HEAT SHRINK
- 621210 (AR) 20 AWG BLK
- 641208 (AR) 20 AWG TW GRY/ WHT

801934
CABLE ASSY, DIP SW

- 211003 CONN 15 PIN
- 212002 HOUSING
- 213004 SCREW LOCK
- 214001 (9) MALE CONTACT
- 621409 (AR) 24 AWG WHT
- 621410 (AR) 24 AWG BLK

801817
UNIV POWER PC BD

- 151069 CAP .22UF
- 151086 (4) CAP 1MF
- 151123 (3) CAP 1000UF
- 151131 CAP 11,000UF
- 211144 (2) CONN HEADER 50 PIN
- 211146 (2) MOLEX CONN 2 PIN
- 211172 MOLEX CONN 6 PIN
- 211173 MOLEX CONN 3 PIN
- 215042 SOCKET 16 PIN
- 215057 (28) SOCKET
- 215058 (8) SOCKET
- 216026 CRIMP LUG #8
- 216208 (5) TEST POINT JUMPER
- 283408 (4) PAN HD 4-40 X 1/4
- 313002 (AR) HEAT SHRINK
- 361111 IC DM74123N

- 370026 OPTIC ISOLATOR
- 471009 RES 270 OHMS 1/8 W
- 471016 RES 1K OHMS 1/8 W
- 471025 RES 4.7K OHMS 1/8W
- 471030 RES 8.2K OHMS 1/8W
- 471044 (2) RES 36K OHMS 1/8W
- 471048 RES 47K OHMS 1/8W
- 471055 RES 100K OHMS 1/8W
- 471179 RES 470K OHMS 1/2W
- 471265 RES 200 OHM 5 WATT
- 472060 (4) POT 10K
- 481501 TRANS PAD
- 482222 TRANS 2N2222
- 484007 DIODE IN4007
- 484937 DIODE IN4937
- 700099 PC BD

801987
MICRO BD

- 171044 MICRO BD
- 201256 IC
- 202056 IC RAM
- 211182 (2) CONN HEADER LATCHING
- 216210 (3) SPRING SHUNT

801988
PROGRAM

- 202512 EPROM

801768
INTERFACE BD

- 151013 (16) CAP .01UF
- 151031 CAP 47PF
- 151032 CAP 22PF
- 151083 (6) CAP 1.0UF
- 201254 IC
- 202265 IC RAM
- 211160 HEADER LATCHING
- 215042 (11) SOCKET 16 PIN
- 215043 SOCKET 24 PIN W
- 215051 (2) SOCKET 20 PIN
- 215059 SOCKET 28 PIN
- 215068 (2) SOCKET 68 PIN
- 216208 TEST POINT JUMPER
- 231014 CRYSTAL 5.24288 MHZ
- 255037 EJECTOR HANDLE
- 365172 (2) IC 75172

- 365173 (3) IC 75173
- 384060 IC 74HC4060
- 384174 IC 74LS174
- 384245 (2) IC 74LS245
- 384257 (2) IC 74HC257
- 384367 IC 74LS367
- 384592 IC 74HC592
- 471007 (2) RES 200 OHMS 1/8W
- 471016 RES 1K OHMS 1/8W
- 471032 (2) RES 10K OHMS 1/8W
- 471055 RES 100K OHMS 1/8W
- 473017 (2) RES ARRAY 10K
- 473030 (3) RES ARRAY 120 OHMS
- 516506 DIP SWITCH
- 700091 PC BD

801610
DECODE PAL

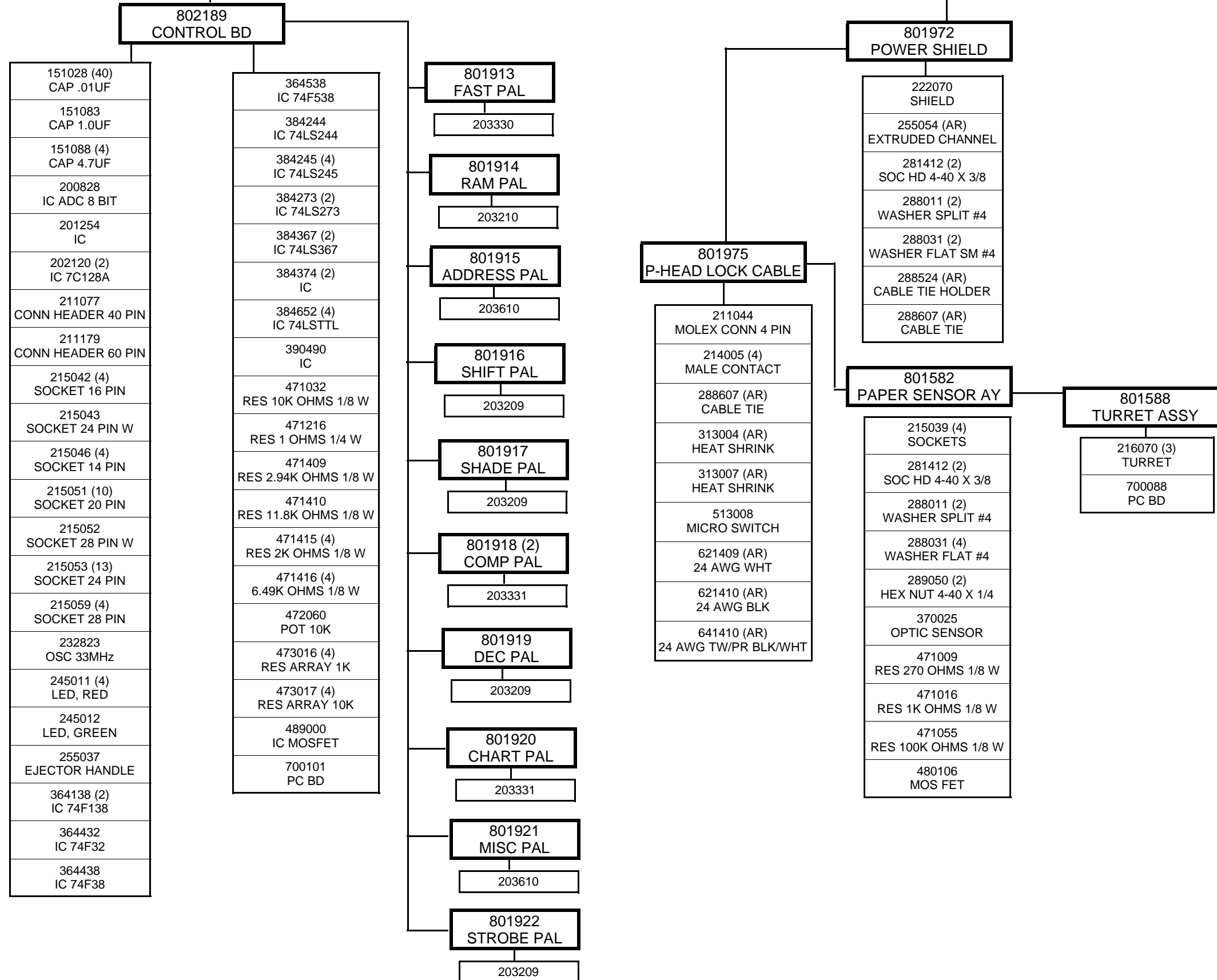
- 203810 PAL

801765
TIMING PAL

- 203810 PAL

801991
FINAL ASSEMBLY (CONT)

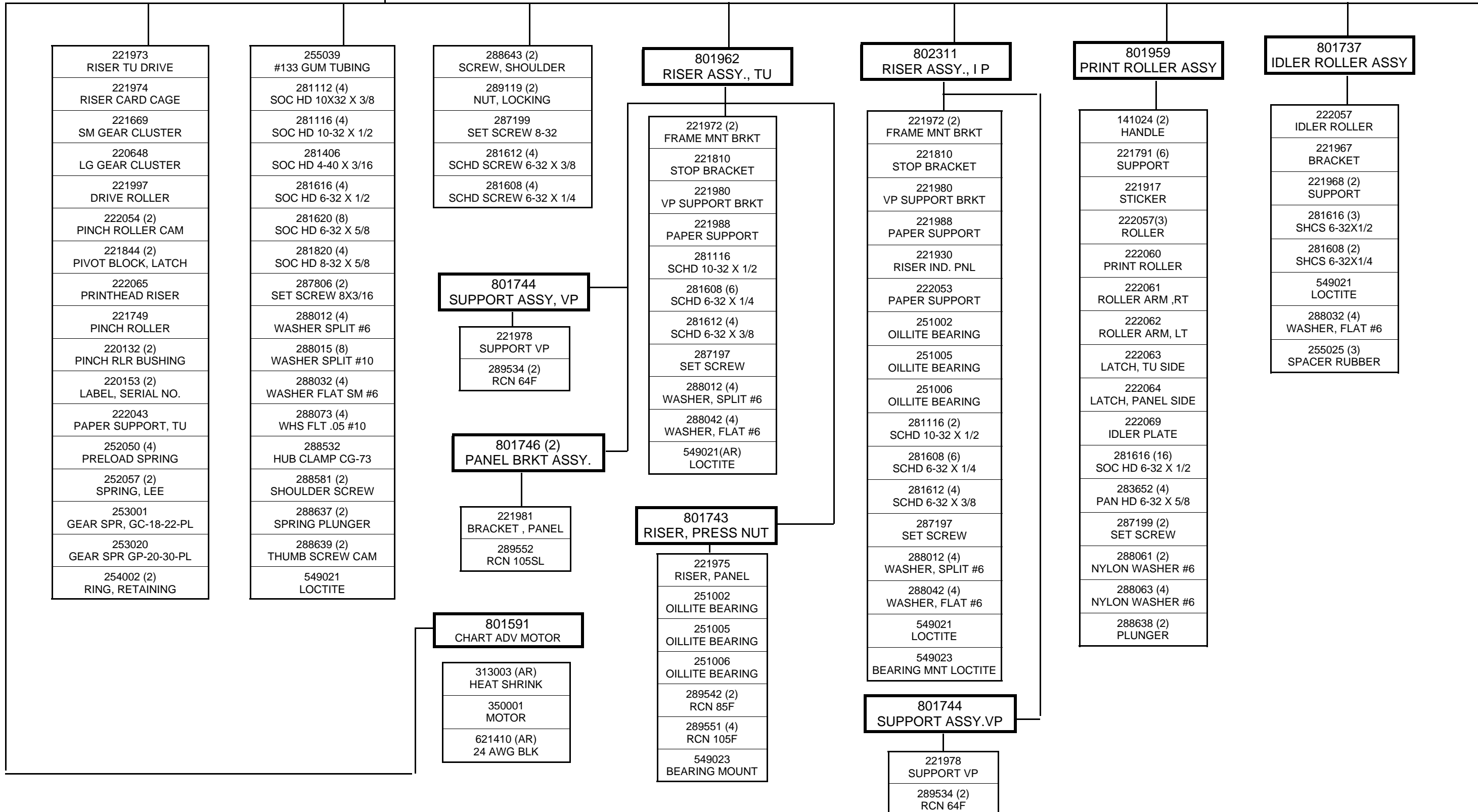
9202



801991
FINAL ASSEMBLY (CONT)

MAIN FRAME ASSEMBLY 802312

9202



| REV | DESCRIPTION | ECO |
|-----|--|------|
| A | 222053 PAPER SUPPORT-MADE CHANGES IN IND PANEL RISER, M FRAME AND FINAL ASSY | 1388 |
| B | ADDED 201256 TO MICRO BD | 1422 |