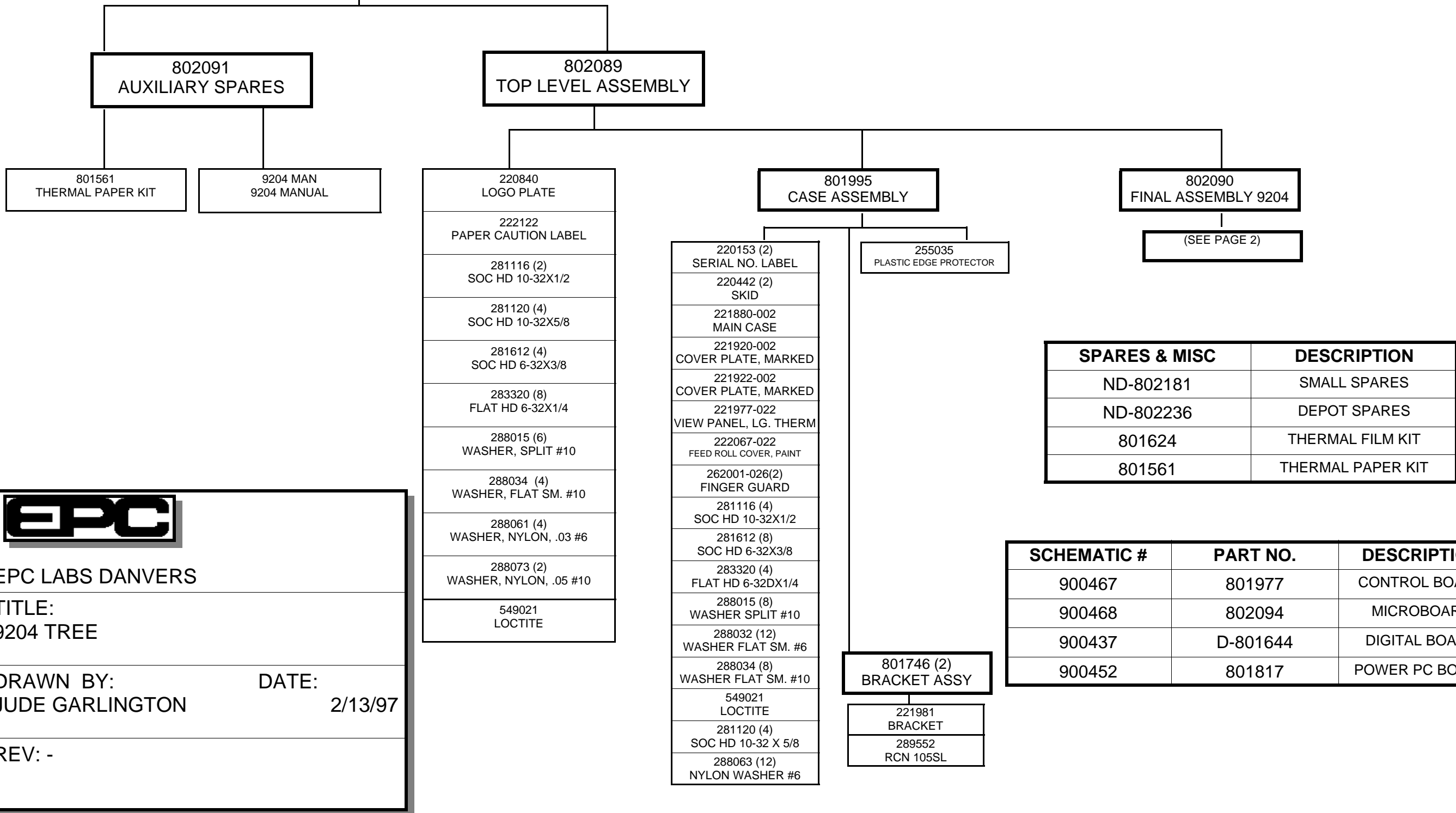


MODEL 9204

2/13/97



EPC

EPC LABS DANVERS

TITLE:
9204 TREE

DRAWN BY: JUDE GARLINGTON DATE: 2/13/97

REV: -

802090 FINAL ASSY

9204

161004 THERMAL COMPOUND
216103 (4) STANDOFF, FEM/FEM
216211 (16) STANDOFF
222046 MOUNTING BRKT UPS
221929-OVR BLANK PANEL
221954 AIR FLOW GUIDE
222026 (2) FAN MOUNT BRKT
222055 PRINthead KYO
222052 MOUNTING BRKT
222071 BLOCK, POWER SHLD
281116 (10) SOC HD 10-32 X 1/2
281406 (4) SOC HD 4-40 X 3/16
281412 (22) SOC HD 4-40 X 3/8
281608 (8) SOC HD 6-32 X 1/4
281612 (3) SOC HD 6-32 X 3/8
281616 (12) SOC HD 6-32 X 1/2
281620 (4) SOC HD 6-32 X 5/8
281808 (4) SOC HD 8-32 X 1/4
283391(8) BIND HD M4X12MM

283408 (4) PAN HD 4-40 X 1/4
288011 (22) WASHER SPLIT #4
288012 (15) WASHER SPLIT #6
288015 (10) WASHER SPLIT #10
288031 (22) WASHER FLT SM #4
288032 (3) WASHER FLT SM #6
288034(2) WASHER FLT SM #10
288042 (15) WASHER FLT STD #6
288044 (4) WASHER STD #10
288064 (4) WASHER NYL FLT #6
288073 (2) WASHER NYL FLT #10
288519 (3) CABLE TIE MOUNT
288524 (3) CABLE TIE HOLDER
288607 A/R CABLE TIE
350011 STEP MOTOR DR MD
400661 DC-DC CONVERTER
549021 LOCTITE
610003 POWER CABLE

**801579
CONVERTER ASSY**

313041 THERMAL PAD
400260 DC-DC CONV 5V

**801642
CONVERTER ASSY**

313041 THERMAL PAD
400263 DC-DC CONV 24VOLTS

**801821
INPUT MODULE ASSY**

313041 THERMAL PAD
400500 INPUT MODULE 300W

**801889
POWER HARNESS**

211042 MOLEX CONN 3 SOC
211174 (2) MOLEX CONN 2 SOC
211175 MOLEX CONN 3 SOC
214006 (3) FEMALE CONTACT
214025 (7) FEMALE CONTACT
621209 (AR) 20 AWG WHT
621210 (AR) 20 AWG BLK
626109 (AR) 18 AWG WHT
626110 (AR) 18 AWG BLK

**801954
INPUT CABLE**

211135 MOLEX CONN 4 SOC
211176 MOLEX CONN 6 SOC
214025 (8) FEMALE CONTACT
288607 (AR) CABLE TIE
626101 (AR) 18 AWG GRN/YEL
626106 (AR) 18 AWG BLUE
626109 (AR) 18 AWG WHT
626110 (AR) 18 AWG BLK

**801971
P-HEAD CABLE**

211008 CONN 37S
211123 CONN 50 PIN HEADER
211185 (2) CONN 10 PIN RECEPT
214002 (27) FEMALE CONTACT
214019 (78) HEADER CONTACT
222072 (2) CONN 26 PIN (REW)
288607 (AR) CABLE TIE
610019 (AR) 22 AWG SHLD 6 COND
621209 (AR) 20 AWG WHT
621210 (AR) 20 AWG BLK
621409 (AR) 24 AWG WHT
621410 (AR) 24 AWG BLK

**801863
RIBBON CABLE, DIP SW**

211078 CONN RIBBON 40 PIN
211169 CONN 15 SOC RIBBON
610010 (AR) 28 AWG , 20 COND

**801990
MAIN CABLE**

211007 CONN 37P
211008 CONN 37S
211042 MOLEX CONN 3 SOC
211045 (2) MOLEX CONN 4 SOC
211123 CONN HEADER 50 PIN
211166 CONN HEADER 60 PIN
214001 (37) MALE CONTACT
214002 (37) FEMALE CONTACT
214006 (4) FEMALE CONTACT
214019 (110) HEADER CONTACT
220301 (6) STANDOFF M/F
221985 CONN PLATE
222048 CONN PLATE
288011 (6) WASHER SPLIT #4
288031 (6) WASHER FLAT SM #4
288602 (AR) GROMMET STRIP BL
288607 (AR) CABLE TIE
289005 (6) HEX NUT 4-40 X 3/16
313004 (AR) HEAT SHRINK
621209 (AR) 20 AWG WHT
621210 (AR) 20 AWG BLK
621409 (AR) 24 AWG WHT
621410 (AR) 24 AWG BLK
801863 RIBBON CABLE

**802158
CONVERTER & FAN AY**

261015 DC BRUSHLESS FAN
288559 (2) SOLDER LUG #2
400761 DC-DC CONV 12V
660000 (AR) 12 AWG BUSS WIRE

**802103
CARD CAGE**

141023 CARD CAGE
211177 MOLEX CONN 2 PIN
214024 (2) MALE CONTACT
626109 (AR) 18 AWG WHT
626110 (AR) 18 AWG BLK

**801931
FAN ASSY**

211043 MOLEX CONN 3 PIN
214005 (4) MALE CONTACT
261011 FAN , BALL BEARING
289534 (1) RCN 64F .125
289537 (3) RCN 64F .250

802090
FINAL ASSY (CONT)

9204

801639
CONTROL PANEL AY

- 221913-OVR PANEL
- 242007 (2) KNOB
- 246513 (2) IND LAMP, WHT
- 246514 (3) IND LAMP, RED 6V
- 246515 IND LAMP, WHT 24V
- 281406 (2) SOC HD 4-40 X 3/16
- 288011 (2) WASHER SPLIT #4
- 288041 (2) WASHER FLAT #4
- 288524 CABLE TIE HOLDER
- 288564 SOLDER LUG #4
- 288607 (AR) CABLE TIE
- 471137 RES 2.0K OHM AT 1/2W
- 472062 1K POT
- 512035 SWITCH, ROTARY
- 516516 (3) SWITCH
- 516518 (3) SWITCH
- 621410 (AR) 24 AWG BLK

801690
CABLE ASSY

- 211007 CONN 37 PIN
- 212004 HOUSING
- 213004 SCREW LOCK
- 214001 (20) MALE CONTACT
- 288564 SOLDER LUG #4
- 621209 (AR) 20 AWG WHT
- 621210 (AR) 20 AWG BLK
- 621409 (AR) 24 AWG WHT
- 621410 (AR) 24 AWG BLK

801584
AUDIO ALARM BD

- 151028 CAP .01UF
- 151083 CAP 1.0UF
- 216070 (5) TURRET
- 246022 BUZZER
- 384000 IC HC7400
- 473018 RES ARRAY 10K
- 480914 (3) DIODE
- 700089 PC BOARD

RIBBON CABLE AY
801728

- 211078 CONN RECEPT 40 PIN
- 211083 CONN RIBBON 25 PIN
- 610005 (AR) CABLE 28 AWG 26 COND

802092
I/O CONN PLATE

- 211175 MOLEX CONN 3 SOC
- 213003 (2) SCREW LOCK
- 214025 (3) FEMALE CONTACT
- 216200 BINDING POST
- 221915-OVR CONN PLATE
- 270009 LINE FILTER
- 281408 (2) SOC HD 4-40 X 1/4
- 283312 (2) FLAT HD 4-40 X 1/2
- 288004 (3) WASHER INT #8
- 288011 (4) WASHER SPLIT #4
- 288031 (2) WASHER FLAT #4
- 288560 SOLDER LUG #4
- 289005 (2) HEX NUT 4-40 X 3/16
- 515034 FUSE 3AMP
- 621410 (AR) 24 AWG BLK
- 626101 (AR) 18 AWG GRN/YEL
- 626105 (AR) 18 AWGBROWN
- 626106 (AR) 18 AWG BLUE

801843
CABLE ASSY,C PL

- 211003 CONN 15 PIN
- 212002 HOUSING
- 213004 SCREW LOCK
- 214001 (9) MALE CONTACT
- 621409 (AR) 24 AWG WHT
- 621410 (AR) 24 AWG BLK

801891
POWER INPUT PC

- 151130 CAP 1000UF
- 211147 MOLEX CONN 4 PIN
- 211173 MOLEX CONN 3 PIN
- 215057 (7) SOCKET
- 215058 (2) SOCKET
- 700103 PC BD

801907
TU MOTOR ASSY

- 151086 CAP 1MF
- 211044 MOLEX CONN 4 PIN
- 214005 (2) MALE CONTACT
- 222044 ADAPTER PLATE
- 222047 MOTOR
- 283372 (3) FLAT HD 4-40 X 1/4
- 288563 SOLDER LUG #10
- 288607 (AR) CABLE TIE
- 313004 (AR) HEAT SHRINK
- 621210 (AR) 20 AWG BLK
- 641208 (AR) 20 AWG TW GRY/WHT

800828
DIP SWITCH PC

- 516506 DIP SWITCH

800831
TURRET ASSY

- 216070 (9) TURRET
- 700046 PC BD

801817
UNIV POWER PC BD

- 151069 CAP .22UF
- 151086 (4) CAP 1MF
- 151123 (3) CAP 1000UF
- 151131 CAP 11,000UF
- 211144 (2) CONN HEADER 50 PIN
- 211146 (2) MOLEX CONN 2 PIN
- 211172 MOLEX CONN 6 PIN
- 211173 MOLEX CONN 3 PIN
- 215042 SOCKET 16 PIN
- 215057 (28) SOCKET
- 215058 (8) SOCKET
- 216026 CRIMP LUG #8
- 216208 (5) TEST POINT JUMPER
- 283408 (4) PAN HD 4-40 X 1/4
- 313002 (AR) HEAT SHRINK
- 361111 IC DM74123N

- 370026 OPTIC ISOLATOR
- 471009 RES 270 OHMS 1/8 W
- 471016 RES 1K OHMS 1/8 W
- 471025 RES 4.7K OHMS 1/8W
- 471030 RES 8.2K OHMS 1/8W
- 471044 (2) RES 36K OHMS 1/8W
- 471048 RES 47K OHMS 1/8W
- 471055 RES 100K OHMS 1/8W
- 471179 RES 470K OHMS 1/2W
- 471265 RES 200 OHM 5 WATT
- 472060 (4) POT 10K
- 481501 TRANS PAD
- 482222 TRANS 2N2222
- 484007 DIODE IN4007
- 484937 DIODE IN4937
- 700099 PC BD

802094
MICRO BD

- 171044 MICRO BD
- 201256 IC
- 202056 IC RAM
- 211182 (2) CONN HEADER LATCHING
- 216210 (3) SPRING SHUNT

802095
PROGRAM

- 202512 EPROM

801644
INTERFACE BD

- 151013 (16) CAP .01UF
- 151031 CAP 47PF
- 151032 CAP 22PF
- 151083 (6) CAP 1.0UF
- 201254 IC
- 202265 IC RAM
- 211160 HEADER LATCHING
- 215042 (11) SOCKET 16 PIN
- 215043 SOCKET 24 PIN W
- 215051 (2) SOCKET 20 PIN
- 215059 SOCKET 28 PIN
- 215068 (2) SOCKET 68 PIN
- 216208 TEST POINT JUMPER
- 231014 CRYSTAL 5.24288 MHZ
- 255037 EJECTOR HANDLE
- 365172 (2) IC 75172

- 365173 (3) IC 75173
- 384060 IC 74HC4060
- 384174 IC 74LS174
- 384245 (2) IC 74LS245
- 384257 (2) IC 74HC257
- 384367 IC 74LS367
- 384592 IC 74HC592
- 471016 RES 1K OHMS 1/8W
- 471055 RES 100K OHMS 1/8W
- 473017 (2) RES ARRAY 10K
- 516506 DIP SWITCH
- 700091 PC BD

801610
DECODE PAL

- 203810 PAL

801765
TIMING PAL

- 203810 PAL

802090
FINAL ASSEMBLY (CONT)

9204

801977
CONTROL BD

151028 (40) CAP .01UF
151083 CAP 1.0UF
151088 (4) CAP 4.7UF
200828 IC ADC 8 BIT
201254 IC
202120 (2) IC 7C128A
211077 CONN HEADER 40 PIN
211179 CONN HEADER 60 PIN
215042 (4) SOCKET 16 PIN
215043 SOCKET 24 PIN W
215046 (4) SOCKET 14 PIN
215051 (10) SOCKET 20 PIN
215052 SOCKET 28 PIN W
215053 (13) SOCKET 24 PIN
215059 (4) SOCKET 28 PIN
232823 OSC 33MHz
245011 (4) LED, RED
245012 LED, GREEN
255037 EJECTOR HANDLE
364138 (2) IC 74F138
364432 IC 74F32
364438 IC 74F38

364538 IC 74F538
384244 IC 74LS244
384245 (4) IC 74LS245
384273 (2) IC 74LS273
384367 (2) IC 74LS367
384374 (2) IC
384652 (4) IC 74LSTTL
390490 IC
471032 RES 10K OHMS 1/8 W
471216 RES 1 OHMS 1/4 W
471409 RES 2.94K OHMS 1/8 W
471410 RES 11.8K OHMS 1/8 W
471415 (4) RES 2K OHMS 1/8 W
471416 (4) 6.49K OHMS 1/8 W
472060 POT 10K
473015 RES ARRAY 10k
473016 (4) RES ARRAY 1K
473017 (4) RES ARRAY 10K
489000 IC MOSFET
700101 PC BD

801913 FAST PAL
203330

801914 RAM PAL
203210

801915 ADDRESS PAL
203610

801916 SHIFT PAL
203209

801917 SHADE PAL
203209

801918 (2) COMP PAL
203331

801919 DEC PAL
203209

801920 CHART PAL
203331

801921 MISC PAL
203610

801922 STROBE PAL
203209

801972
POWER SHIELD

222070 SHIELD
255054 (AR) EXTRUDED CHANNEL
281412 (2) SOC HD 4-40 X 3/8
288011 (2) WASHER SPLIT #4
288031 (2) WASHER FLAT SM #4
288524 (AR) CABLE TIE HOLDER
288607 (AR) CABLE TIE

801975
P-HEAD LOCK CABLE

211044 MOLEX CONN 4 PIN
214005 (4) MALE CONTACT
288607 (AR) CABLE TIE
313004 (AR) HEAT SHRINK
313007 (AR) HEAT SHRINK
513008 MICRO SWITCH
621409 (AR) 24 AWG WHT
621410 (AR) 24 AWG BLK
641410 (AR) 24 AWG TW/PR BLK/WHT

801582
PAPER SENSOR AY

215039 (4) SOCKETS
281412 (2) SOC HD 4-40 X 3/8
288011 (2) WASHER SPLIT #4
288031 (4) WASHER FLAT #4
289050 (2) HEX NUT 4-40 X 1/4
370025 OPTIC SENSOR
471009 RES 270 OHMS 1/8 W
471016 RES 1K OHMS 1/8 W
471055 RES 100K OHMS 1/8 W
480106 MOS FET

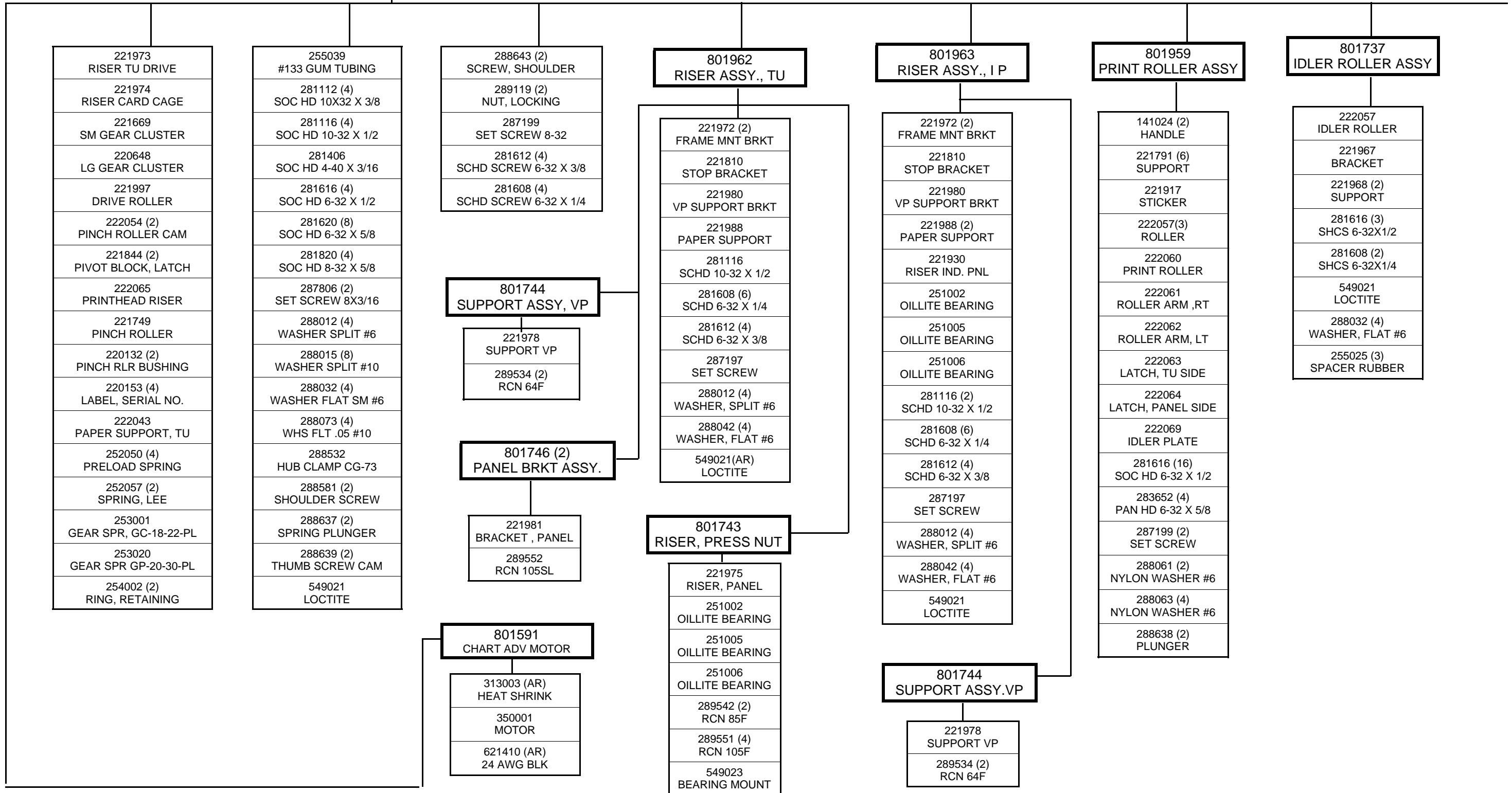
801588
TURRET ASSY

216070 (3) TURRET
700088 PC BD

802090
FINAL ASSY (CONT)

MAIN FRAME ASSEMBLY 801989

9204



REV	DESCRIPTION	ECO
A	ADDED 201256 TO MICRO BD	1422