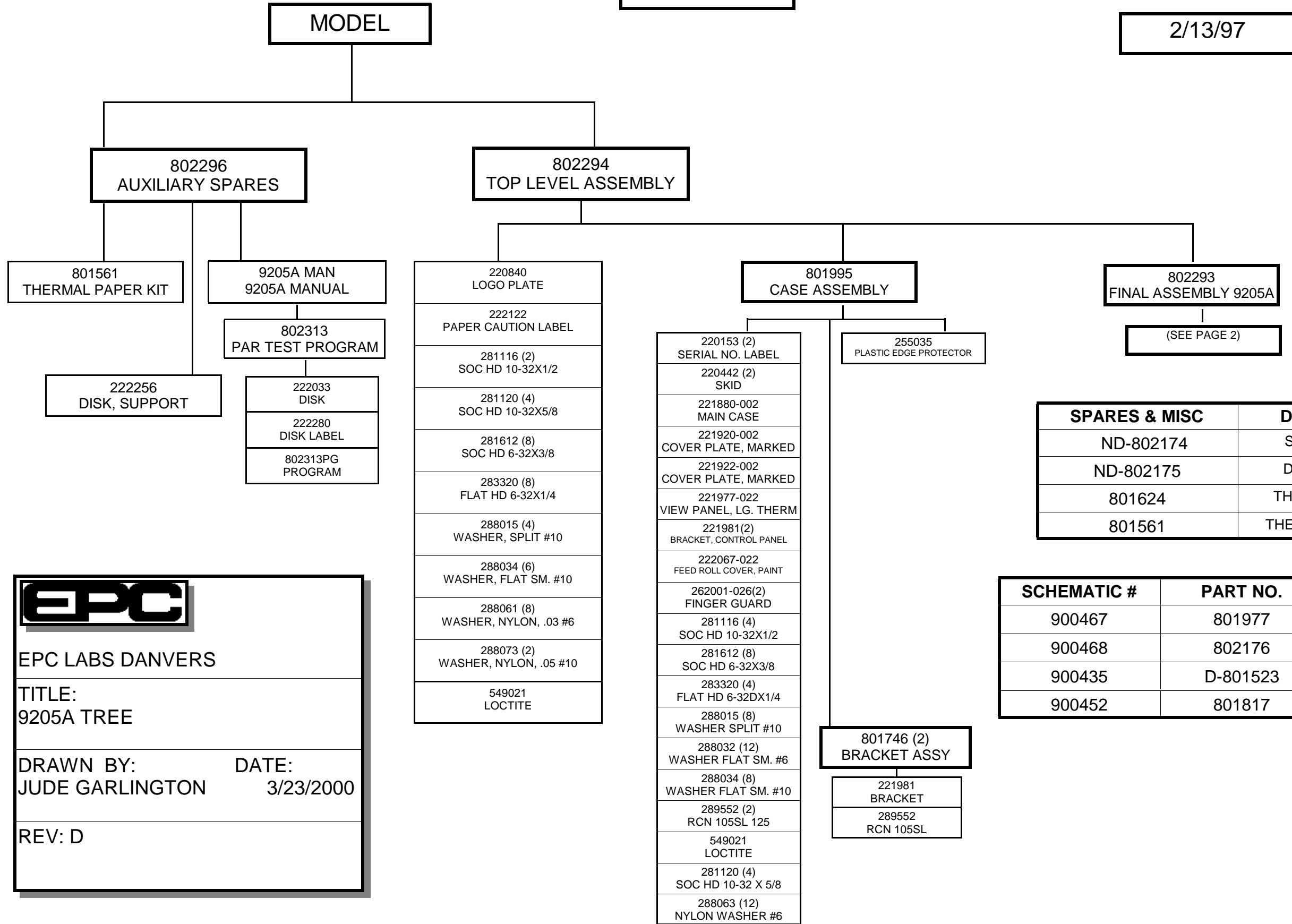


9205A

MODEL

2/13/97



SPARES & MISC	DESCRIPTION
ND-802174	SMALL SPARES
ND-802175	DEPOT SPARES
801624	THERMAL FILM KIT
801561	THERMAL PAPER KIT

SCHEMATIC #	PART NO.	DESCRIPTION
900467	801977	CONTROL BOARD
900468	802176	MICROBOARD
900435	D-801523	DIGITAL BOARD
900452	801817	POWER PC BOARD

EPC

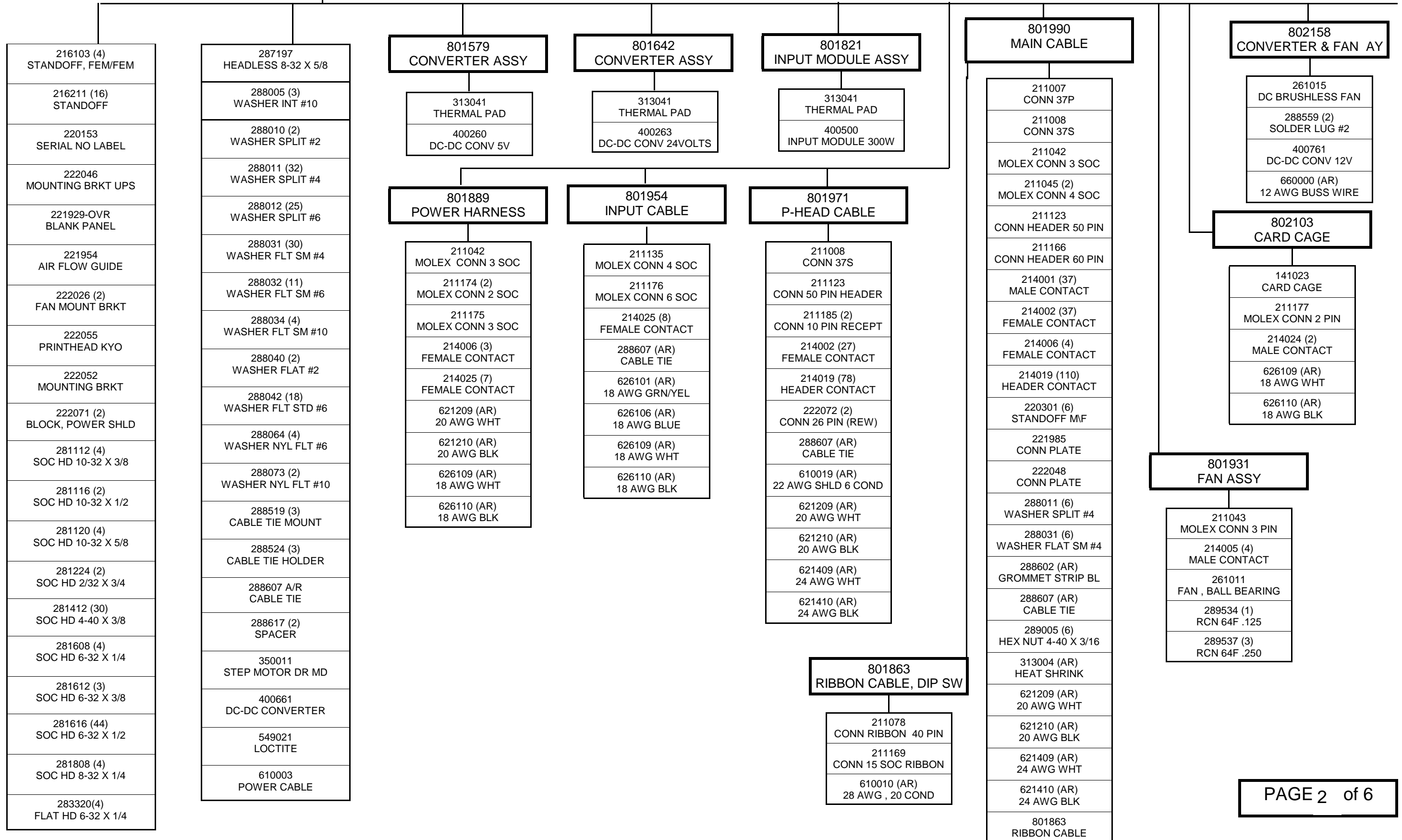
EPC LABS DANVERS

TITLE:
9205A TREE

DRAWN BY: JUDE GARLINGTON DATE: 3/23/2000

REV: D

FINAL ASSEMBLY 802293



802293
FINAL ASSY (CONT)

9205A

802290
CONTROL PANEL AY

- 211045 MOLEX CONN 4 SOC
- 211134 MOLEX CONN 4 PIN
- 214006 (2) FEMALE CONTACT
- 214024 (4) MALE CONTACTS
- 222173-OVR PANEL
- 246513 IND LAMP, WHT
- 246514 (3) IND LAMP, RED 6V
- 246515 IND LAMP, WHT 24V
- 281406 (2) SOC HD 4-40 X 3/16
- 288011 WASHER SPLIT #4
- 288012 WASHER SPLIT #6
- 288032 WASHER FLAT #6
- 288041 WASHER FLAT #4
- 288519 CABLE TIE MOUNT
- 288564 SOLDER LUG #4
- 288607 (AR) CABLE TIE
- 289010 HEX NUT SM #6
- 313002 (AR) HEAT SHRINK
- 313004 (AR) HEAT SHRINK
- 471137 RES 2.0K OHM AT 1/2W
- 516516 SWITCH
- 516517 switch
- 516518 (2) SWITCH
- 516523 switch
- 516525 POWER SWITCH
- 621409 (AR) 24 AWG WHT
- 621410 (AR) 24 AWG BLK
- 626109 (AR) 18 AWG WHT
- 626110 (AR) 18 AWG BLK

801691
CABLE ASSY

- 211007 CONN 37 PIN
- 212004 HOUSING
- 213004 SCREW LOCK
- 214001 (15) MALE CONTACT
- 288564 SOLDER LUG #4
- 621210 (AR) 20 AWG BLK
- 621409 (AR) 24 AWG WHT
- 621410 (AR) 24 AWG BLK

801584
AUDIO ALARM BD

- 151028 CAP .01UF
- 151083 CAP 1.0UF
- 216070 (5) TURRET
- 246022 BUZZER
- 384000 IC HC7400
- 473018 RES ARRAY 10K
- 480914 (3) DIODE
- 700089 PC BOARD

802289
I/O CONN PLATE

- 213003 (2) SCREW LOCK
- 216200 BINDING POST
- 222172-OVR CONN PLATE
- 281408 (2) SOC HD 4-40 X 1/4
- 288031 (2) WASHER FLAT #4
- 288042 WASHER FLAT #6
- 288519 CABLE TIE MOUNT
- 288565 SOLDER LUG #6
- 288566 SOLDER LUG #8
- 289060 HEX NUT #6
- 626101 (AR) 18 AWG GRN/YEL

800828
DIP SWITCH PC

- 516506 DIP SWITCH

800831
TURRET ASSY

- 216070 (9) TURRET
- 700046 PC BD

802179
CABLE ASSY

- 211005 CONN 25 PIN
- 211079 HEADER CONN 26 PIN
- 214001 (25) MALE CONTACT
- 214019 (25) HEADER CONTACT
- 610012 (AR) CABLE 25 COND

802288
POWER MODULE

- 211135 MOLEX CONN 4 SOC
- 211175 MOLEX CONN 3 SOC
- 214025 (7) FEMALE CONTACTS
- 216220 (3) CRIMP LUG
- 270017 LINE MODULE
- 288607 (AR) CABLE TIE
- 313007 (AR) HEAT SHRINK
- 313018 (AR) COND HEAT SHRINK
- 515034 (2) FUSE 3 AMP
- 626101 (AR) 18 AWG GRN/YEL
- 626105 (AR) 18 AWG BROWN
- 626106 (AR) 18 AWG BLUE
- 660006 (AR) 24 AWG BUSS WIRE

801817
UNIV POWER PC BD

- 151069 CAP .22UF
- 151086 (4) CAP 1MF
- 151123 (3) CAP 1000UF
- 151131 CAP 11,000UF
- 211144 (2) CONN HEADER 50 PIN
- 211146 (2) MOLEX CONN 2 PIN
- 211172 MOLEX CONN 6 PIN
- 211173 MOLEX CONN 3 PIN
- 215042 SOCKET 16 PIN
- 215057 (28) SOCKET
- 215058 (8) SOCKET
- 216026 CRIMP LUG #8
- 216208 (5) TEST POINT JUMPER
- 283408 (4) PAN HD 4-40 X 1/4
- 313002 (AR) HEAT SHRINK
- 361111 IC DM74123N

- 370026 OPTIC ISOLATOR
- 471009 RES 270 OHMS 1/8 W
- 471016 RES 1K OHMS 1/8 W
- 471025 RES 4.7K OHMS 1/8W
- 471030 RES 8.2K OHMS 1/8W
- 471044 (2) RES 36K OHMS 1/8W
- 471048 RES 47K OHMS 1/8W
- 471055 RES 100K OHMS 1/8W
- 471179 RES 470K OHMS 1/2W
- 471265 RES 200 OHM 5 WATT
- 481501 TRANS PAD
- 482222 TRANS 2N2222
- 484007 DIODE IN4007
- 484937 DIODE IN4937
- 700099 PC BD

801843
CABLE ASSY,C PL

- 211003 CONN 15 PIN
- 212002 HOUSING
- 213004 SCREW LOCK
- 214001 (9) MALE CONTACT
- 621409 (AR) 24 AWG WHT
- 621410 (AR) 24 AWG BLK

801523
INTERFACE BD

- 151002 CAP 15PF
- 151008 (3) CAP 150PF
- 151013 (11) CAP .01UF
- 151028 (2) CAP .01UF
- 151031 CAP 47PF
- 151066 CAP .1UF
- 151083 (6) CAP1.0UF
- 201252 IC 82C52
- 211143 HEADER CONN 26 PIN
- 211182 HEADER CONN 14 PIN
- 215042 (2) SOCKET 16 PIN
- 215046 (5) SOCKET 14 PIN
- 215051 (4) SOCKET 20 PIN
- 215052 SOCKET 28 PIN W
- 215053 (4) SOCKET 24 PIN
- 216208 TEST POINT JUMPER

802180
DMA CABLE ASSY

- 211138 (2) HEADER CONN 14 PIN
- 214019 (4) HEADER CONTACT
- 641410 (AR) 24 AWG TW BLK/WHT

- 231011 CRYSTAL 2.4576 MHZ
- 231012 CRYSTAL 16.000 MHZ
- 231014 CRYSTAL 5.24288 MHZ
- 255037 EJECTOR HANDLE
- 360031 IC
- 360032 IC
- 384000 IC HC7400
- 384244 (2) 74LS244
- 384245 IC 74LS245
- 384374 IC
- 384652 (2) IC 74LS TTL
- 387404 IC
- 387432 IC
- 471016 (8) RES 1K OHMS 1/8W
- 471032 RES 10K OHMS 1/8W
- 471055 RES 100K OHMS 1/8W
- 471061 (2) RES 2K OHMS 1/8W
- 473017 (3) RES ARRAY 10K
- 700083 PC BD

801525
DECODE PAL

- 203208 PAL

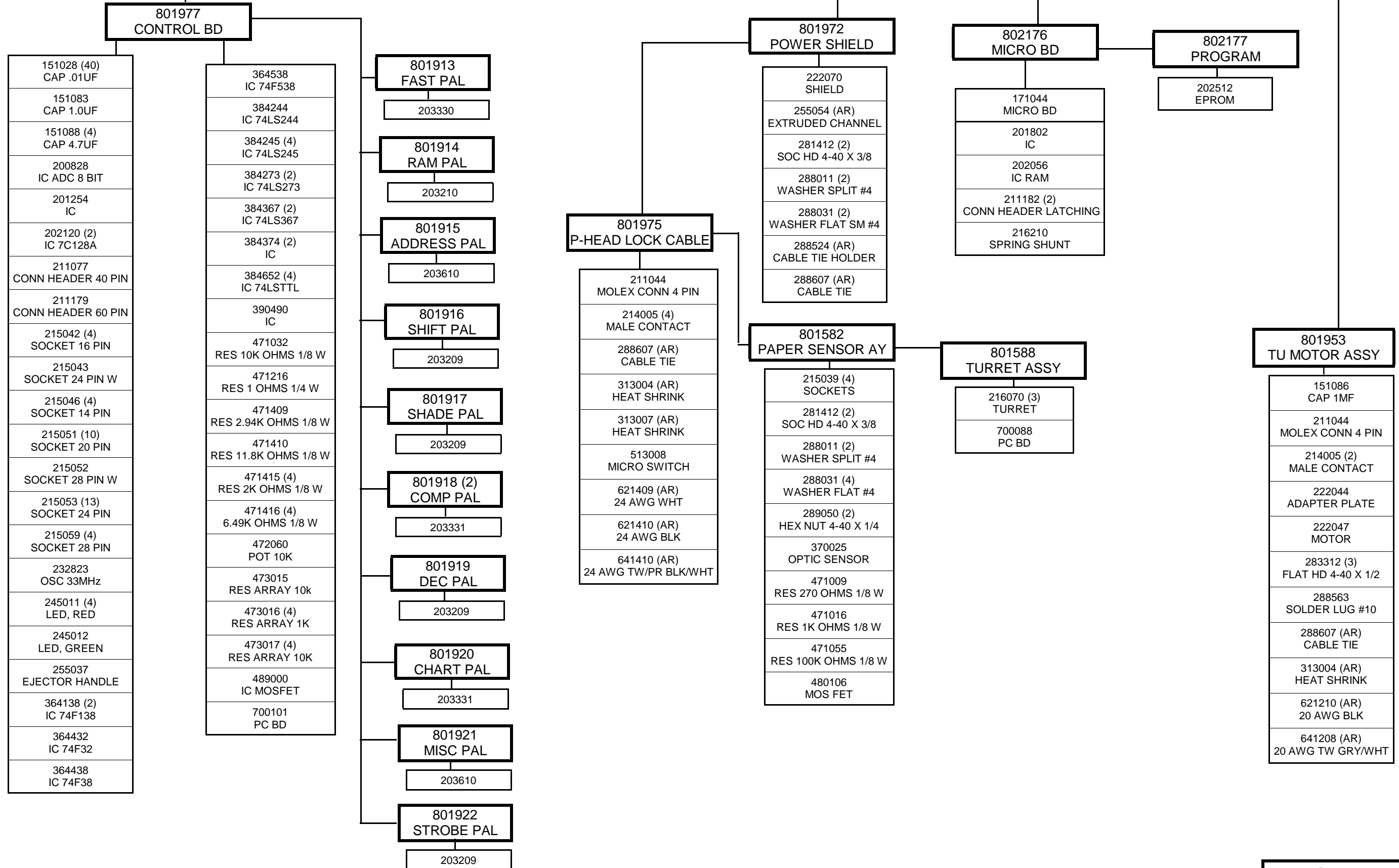
801880
TIMING PAL

- 203208 PAL

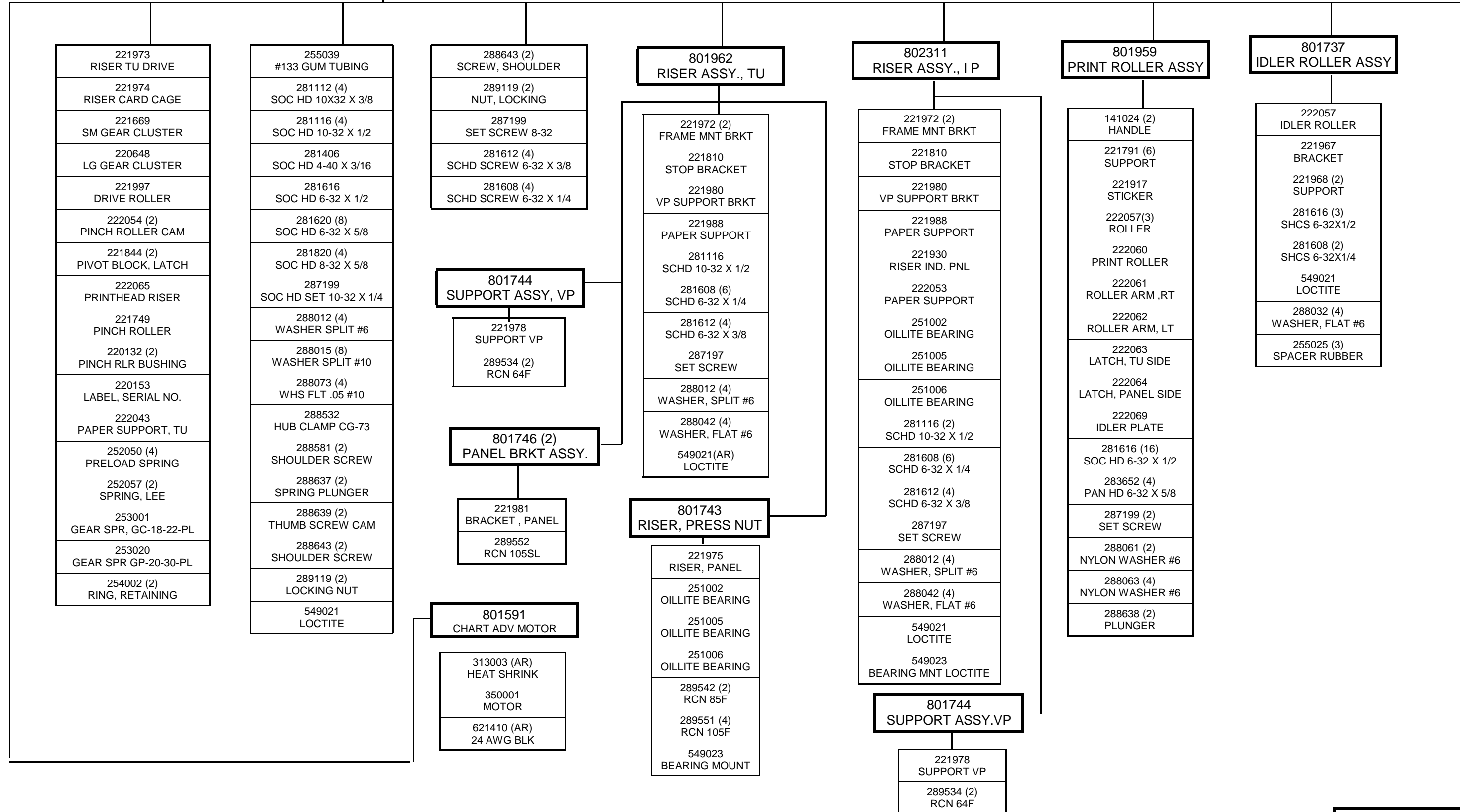
801891
POWER INPUT PC

- 151130 CAP 1000UF
- 211147 MOLEX CONN 4 PIN
- 211173 MOLEX CONN 3 PIN
- 215057 (7) SOCKET
- 215058 (2) SOCKET
- 700103 PC BD

802293
FINAL ASSEMBLY (CONT)



MAIN FRAME ASSEMBLY 802312



REV	DESCRIPTION	ECO
A	ADDED PARALLEL TEST DISK TO MANUAL	1392
B	ADDED 802383/DISK, DEMO IPU TO AUX SPARES	1443
C	DELETED DISK 802383 AND ADDED 222256 SUPPORT DISK	1521
D	ADDED NEW STRUCTURE TO MANUAL	1550