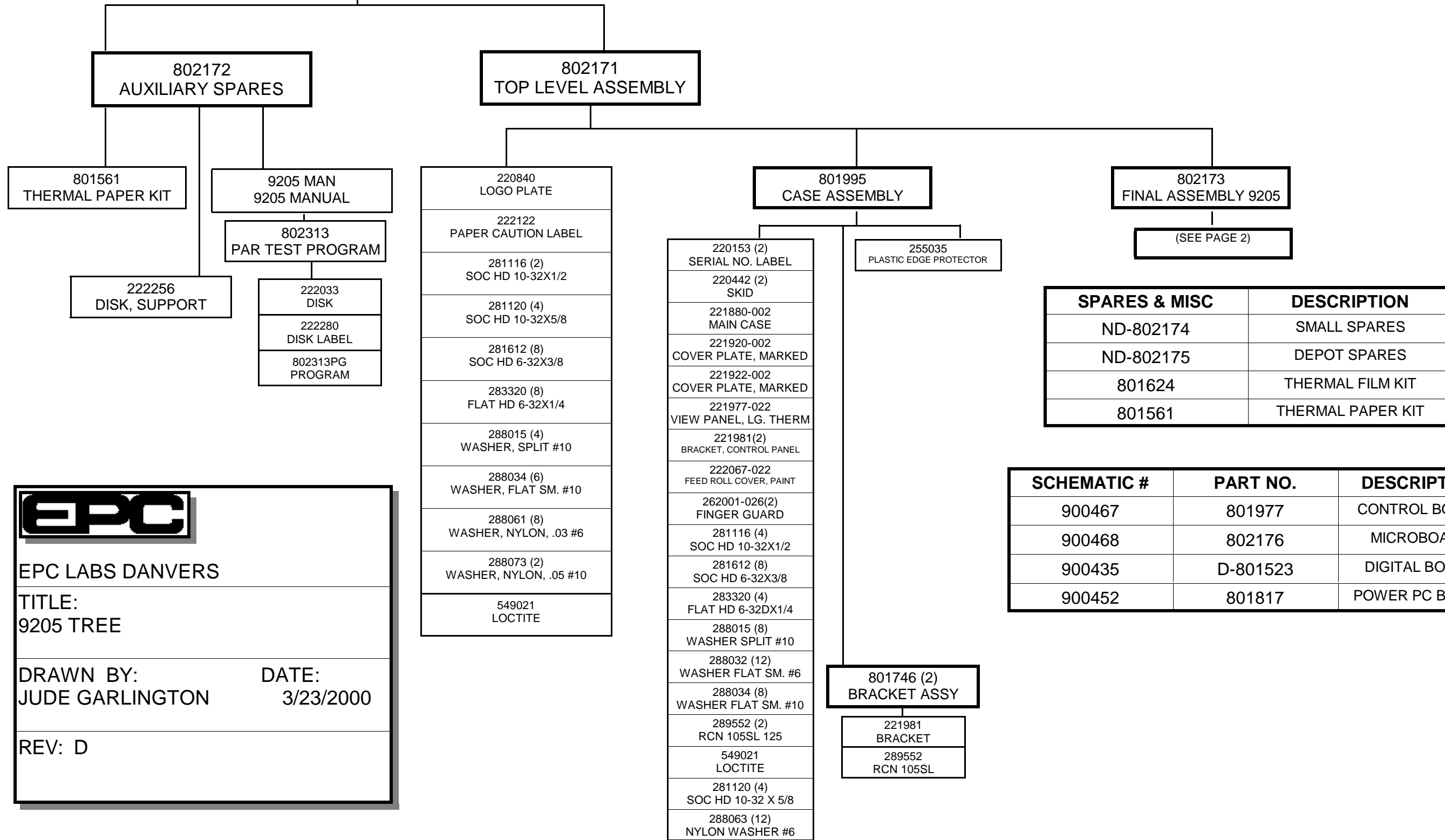


MODEL 9205

9205

2/13/97



SPARES & MISC	DESCRIPTION
ND-802174	SMALL SPARES
ND-802175	DEPOT SPARES
801624	THERMAL FILM KIT
801561	THERMAL PAPER KIT

SCHEMATIC #	PART NO.	DESCRIPTION
900467	801977	CONTROL BOARD
900468	802176	MICROBOARD
900435	D-801523	DIGITAL BOARD
900452	801817	POWER PC BOARD

EPC

EPC LABS DANVERS

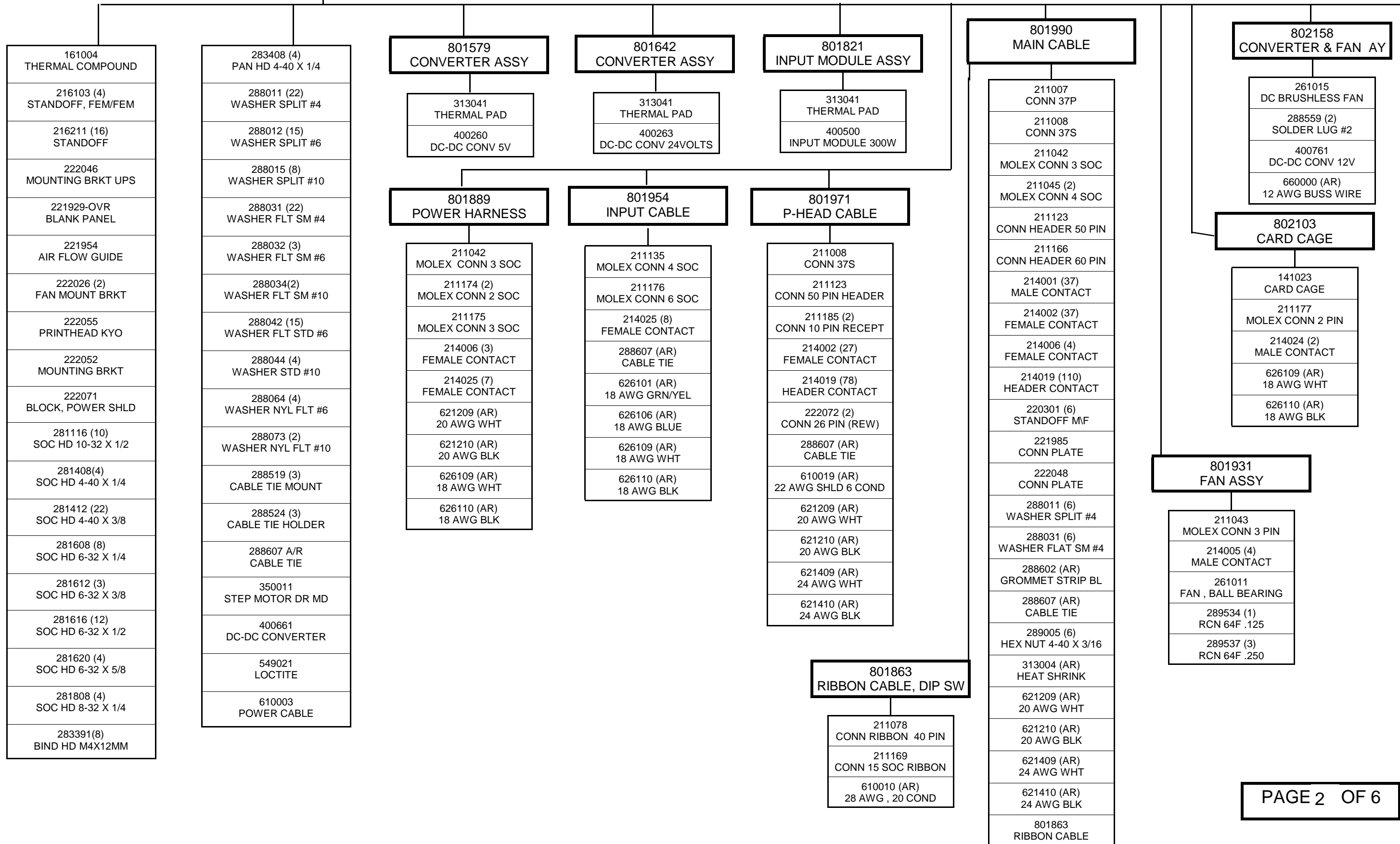
TITLE:
9205 TREE

DRAWN BY: JUDE GARLINGTON DATE: 3/23/2000

REV: D

FINAL ASSEMBLY 802173

9205



802173
FINAL ASSY (CONT)

9205

801670
CONTROL PANEL AY

- 221934-OVR PANEL
- 246513 IND LAMP, WHT
- 246514 (3) IND LAMP, RED 6V
- 246515 IND LAMP, WHT 24V
- 281406 (2) SOC HD 4-40 X 3/16
- 288011 (2) WASHER SPLIT #4
- 288041 (2) WASHER FLAT #4
- 288524 CABLE TIE HOLDER
- 288564 SOLDER LUG #4
- 288607 (AR) CABLE TIE
- 471137 RES 2.0K OHM AT 1/2W
- 516516 SWITCH
- 516517 switch
- 516518 (2) SWITCH
- 516523 switch
- 621410 (AR) 24 AWG BLK

801691
CABLE ASSY

- 211007 CONN 37 PIN
- 212004 HOUSING
- 213004 SCREW LOCK
- 214001 (15) MALE CONTACT
- 288564 SOLDER LUG #4
- 621210 (AR) 20 AWG BLK
- 621409 (AR) 24 AWG WHT
- 621410 (AR) 24 AWG BLK

801584
AUDIO ALARM BD

- 151028 CAP .01UF
- 151083 CAP 1.0UF
- 216070 (5) TURRET
- 246022 BUZZER
- 384000 IC HC7400
- 473018 RES ARRAY 10K
- 480914 (3) DIODE
- 700089 PC BOARD

802178
I/O CONN PLATE

- 211175 MOLEX CONN 3 SOC
- 213003 (2) SCREW LOCK
- 214025 (3) FEMALE CONTACT
- 216200 BINDING POST
- 221915-OVR CONN PLATE
- 270009 LINE FILTER
- 281408 (2) SOC HD 4-40 X 1/4
- 283312 (2) FLAT HD 4-40 X 1/2
- 288004 (3) WASHER INT #8
- 288011 (4) WASHER SPLIT #4
- 288031 (2) WASHER FLAT #4
- 288560 SOLDER LUG #4
- 289005 (2) HEX NUT 4-40 X 3/16
- 313002 (AR) HEAT SHRINK
- 515034 FUSE 3AMP
- 621410 (AR) 24 AWG BLK
- 626101 (AR) 18 AWG GRN/YEL
- 626105 (AR) 18 AWGBROWN
- 626106 (AR) 18 AWG BLUE

800828
DIP SWITCH PC

- 516506 DIP SWITCH

800831
TURRET ASSY

- 216070 (9) TURRET
- 700046 PC BD

801891
POWER INPUT PC

- 151130 CAP 1000UF
- 211147 MOLEX CONN 4 PIN
- 211173 MOLEX CONN 3 PIN
- 215057 (7) SOCKET
- 215058 (2) SOCKET
- 700103 PC BD

802179
CABLE ASSY

- 211005 CONN 25 PIN
- 211079 HEADER CONN 26 PIN
- 214001 (25) MALE CONTACT
- 214019 (25) HEADER CONTACT
- 610012 (AR) CABLE 25 COND

801843
CABLE ASSY,C PL

- 211003 CONN 15 PIN
- 212002 HOUSING
- 213004 SCREW LOCK
- 214001 (9) MALE CONTACT
- 621409 (AR) 24 AWG WHT
- 621410 (AR) 24 AWG BLK

801817
UNIV POWER PC BD

- 151069 CAP .22UF
- 151086 (4) CAP 1MF
- 151123 (3) CAP 1000UF
- 151131 CAP 11,000UF
- 211144 (2) CONN HEADER 50 PIN
- 211146 (2) MOLEX CONN 2 PIN
- 211172 MOLEX CONN 6 PIN
- 211173 MOLEX CONN 3 PIN
- 215042 SOCKET 16 PIN
- 215057 (28) SOCKET
- 215058 (8) SOCKET
- 216026 CRIMP LUG #8
- 216208 (5) TEST POINT JUMPER
- 283408 (4) PAN HD 4-40 X 1/4
- 313002 (AR) HEAT SHRINK
- 361111 IC DM74123N

- 370026 OPTIC ISOLATOR
- 471009 RES 270 OHMS 1/8 W
- 471016 RES 1K OHMS 1/8 W
- 471025 RES 4.7K OHMS 1/8W
- 471030 RES 8.2K OHMS 1/8W
- 471044 (2) RES 36K OHMS 1/8W
- 471048 RES 47K OHMS 1/8W
- 471055 RES 100K OHMS 1/8W
- 471179 RES 470K OHMS 1/2W
- 471265 RES 200 OHM 5 WATT
- 472060 (4) POT 10K
- 481501 TRANS PAD
- 482222 TRANS 2N2222
- 484007 DIODE IN4007
- 484937 DIODE IN4937
- 700099 PC BD

802176
MICRO BD

- 171044 MICRO BD
- 201256 IC
- 201802 IC
- 202056 IC RAM
- 211182 (2) CONN HEADER LATCHING
- 216210 SPRING SHUNT

802177
PROGRAM

- 202512 EPROM

801523
INTERFACE BD

- 151002 CAP 15PF
- 151008 (3) CAP 150PF
- 151013 (11) CAP .01UF
- 151028 (2) CAP .01UF
- 151031 CAP 47PF
- 151066 CAP .1UF
- 151083 (6) CAP 1.0UF
- 201252 IC 82C52
- 211143 HEADER CONN 26 PIN
- 211182 HEADER CONN 14 PIN
- 215042 (2) SOCKET 16 PIN
- 215046 (5) SOCKET 14 PIN
- 215051 (4) SOCKET 20 PIN
- 215052 SOCKET 28 PIN W
- 215053 (4) SOCKET 24 PIN
- 216208 TEST POINT JUMPER

- 231011 CRYSTAL 2.4576 MHZ
- 231012 CRYSTAL 16.000 MHZ
- 231014 CRYSTAL 5.24288 MHZ
- 255037 EJECTOR HANDLE
- 360031 IC
- 360032 IC
- 384000 IC HC7400
- 384244 (2) 74LS244
- 384245 IC 74LS245
- 384374 IC
- 384652 (2) IC 74LSTTL
- 387404 IC
- 387432 IC
- 471016 (8) RES 1K OHMS 1/8W
- 471032 RES 10K OHMS 1/8W
- 471055 RES 100K OHMS 1/8W
- 471061 (2) RES 2K OHMS 1/8W
- 473017 (3) RES ARRAY 10K
- 700083 PC BD

802180
DMA CABLE ASSY

- 211138 (2) HEADER CONN 14 PIN
- 214019 (4) HEADER CONTACT
- 641410 (AR) 24 AWG TW BLK/WHT

801525
DECODE PAL

- 203208 PAL

801880
CONTROL PAL

- 203208 PAL

9205

802173
FINAL ASSEMBLY (CONT)

801977
CONTROL BD

151028 (40) CAP .01UF
151083 CAP 1.0UF
151088 (4) CAP 4.7UF
200828 IC ADC 8 BIT
201254 IC
202120 (2) IC 7C128A
211077 CONN HEADER 40 PIN
211179 CONN HEADER 60 PIN
215042 (4) SOCKET 16 PIN
215043 SOCKET 24 PIN W
215046 (4) SOCKET 14 PIN
215051 (10) SOCKET 20 PIN
215052 SOCKET 28 PIN W
215053 (13) SOCKET 24 PIN
215059 (4) SOCKET 28 PIN
232823 OSC 33MHz
245011 (4) LED, RED
245012 LED, GREEN
255037 EJECTOR HANDLE
364138 (2) IC 74F138
364432 IC 74F32
364438 IC 74F38

364538 IC 74F538
384244 IC 74LS244
384245 (4) IC 74LS245
384273 (2) IC 74LS273
384367 (2) IC 74LS367
384374 (2) IC
384652 (4) IC 74LSTTL
390490 IC
471032 RES 10K OHMS 1/8 W
471216 RES 1 OHMS 1/4 W
471409 RES 2.94K OHMS 1/8 W
471410 RES 11.8K OHMS 1/8 W
471415 (4) RES 2K OHMS 1/8 W
471416 (4) 6.49K OHMS 1/8 W
472060 POT 10K
473015 RES ARRAY 10k
473016 (4) RES ARRAY 1K
473017 (4) RES ARRAY 10K
489000 IC MOSFET
700101 PC BD

801913
FAST PAL

203330

801914
RAM PAL

203210

801915
ADDRESS PAL

203610

801916
SHIFT PAL

203209

801917
SHADE PAL

203209

801918 (2)
COMP PAL

203331

801919
DEC PAL

203209

801920
CHART PAL

203331

801921
MISC PAL

203610

801922
STROBE PAL

203209

801972
POWER SHIELD

222070 SHIELD
255054 (AR) EXTRUDED CHANNEL
281412 (2) SOC HD 4-40 X 3/8
288011 (2) WASHER SPLIT #4
288031 (2) WASHER FLAT SM #4
288524 (AR) CABLE TIE HOLDER
288607 (AR) CABLE TIE

801975
P-HEAD LOCK CABLE

211044 MOLEX CONN 4 PIN
214005 (4) MALE CONTACT
288607 (AR) CABLE TIE
313004 (AR) HEAT SHRINK
313007 (AR) HEAT SHRINK
513008 MICRO SWITCH
621409 (AR) 24 AWG WHT
621410 (AR) 24 AWG BLK
641410 (AR) 24 AWG TW/PR BLK/WHT

801582
PAPER SENSOR AY

215039 (4) SOCKETS
281412 (2) SOC HD 4-40 X 3/8
288011 (2) WASHER SPLIT #4
288031 (4) WASHER FLAT #4
289050 (2) HEX NUT 4-40 X 1/4
370025 OPTIC SENSOR
471009 RES 270 OHMS 1/8 W
471016 RES 1K OHMS 1/8 W
471055 RES 100K OHMS 1/8 W
480106 MOS FET

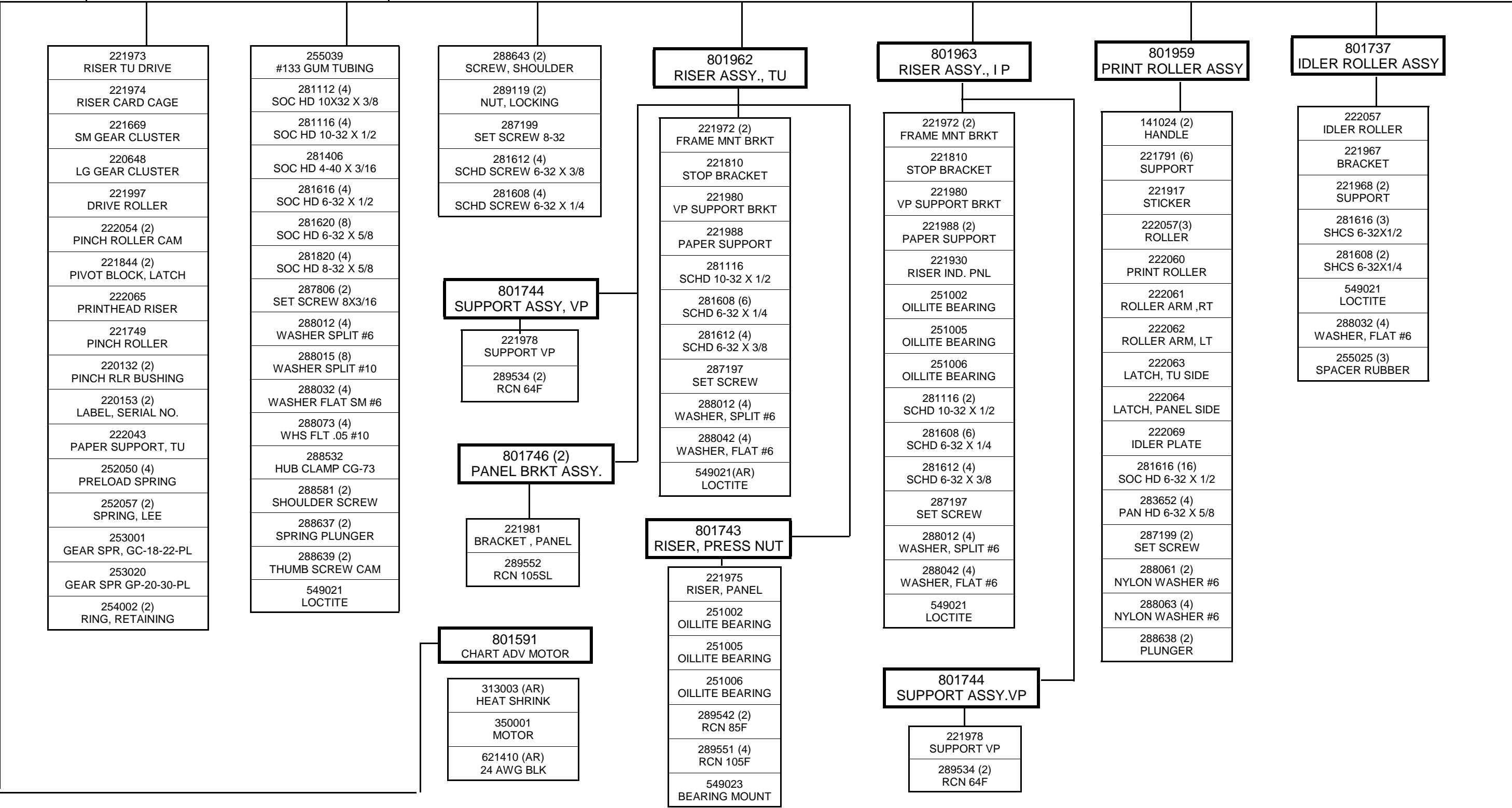
801588
TURRET ASSY

216070 (3) TURRET
700088 PC BD

801907
TU MOTOR ASSY

151086 CAP 1MF
211044 MOLEX CONN 4 PIN
214005 (2) MALE CONTACT
222044 ADAPTER PLATE
222047 MOTOR
283372 (3) FLAT HD 4-40 X 1/4
288563 SOLDER LUG #10
288607 (AR) CABLE TIE
313004 (AR) HEAT SHRINK
621210 (AR) 20 AWG BLK
641208 (AR) 20 AWG TW GRY/WHT

MAIN FRAME ASSEMBLY 801989



REV	DESCRIPTION	ECO
A	ADDED PARALLEL TEST DISK TO MANUAL	1392
B	ADDED 201256 TO MICRO BD	1422
C	DELETED DISK 802383 AND ADDED 222256 SUPPORT DISK	1521
D	ADDED NEW STRUCTURE TO MANUAL	1550