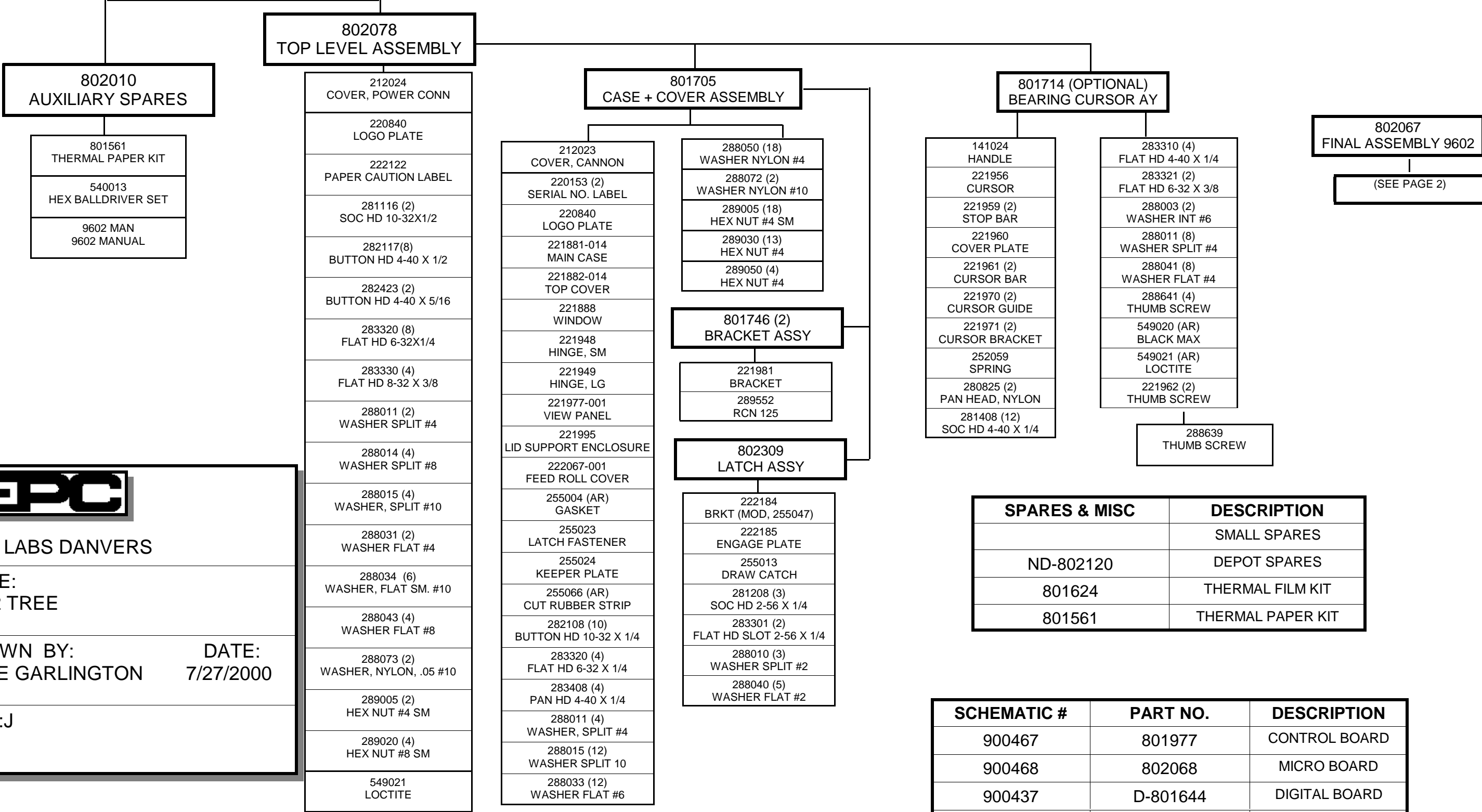


MODEL 9602

2/5/98



**EPC**

EPC LABS DANVERS

TITLE:  
9602 TREE

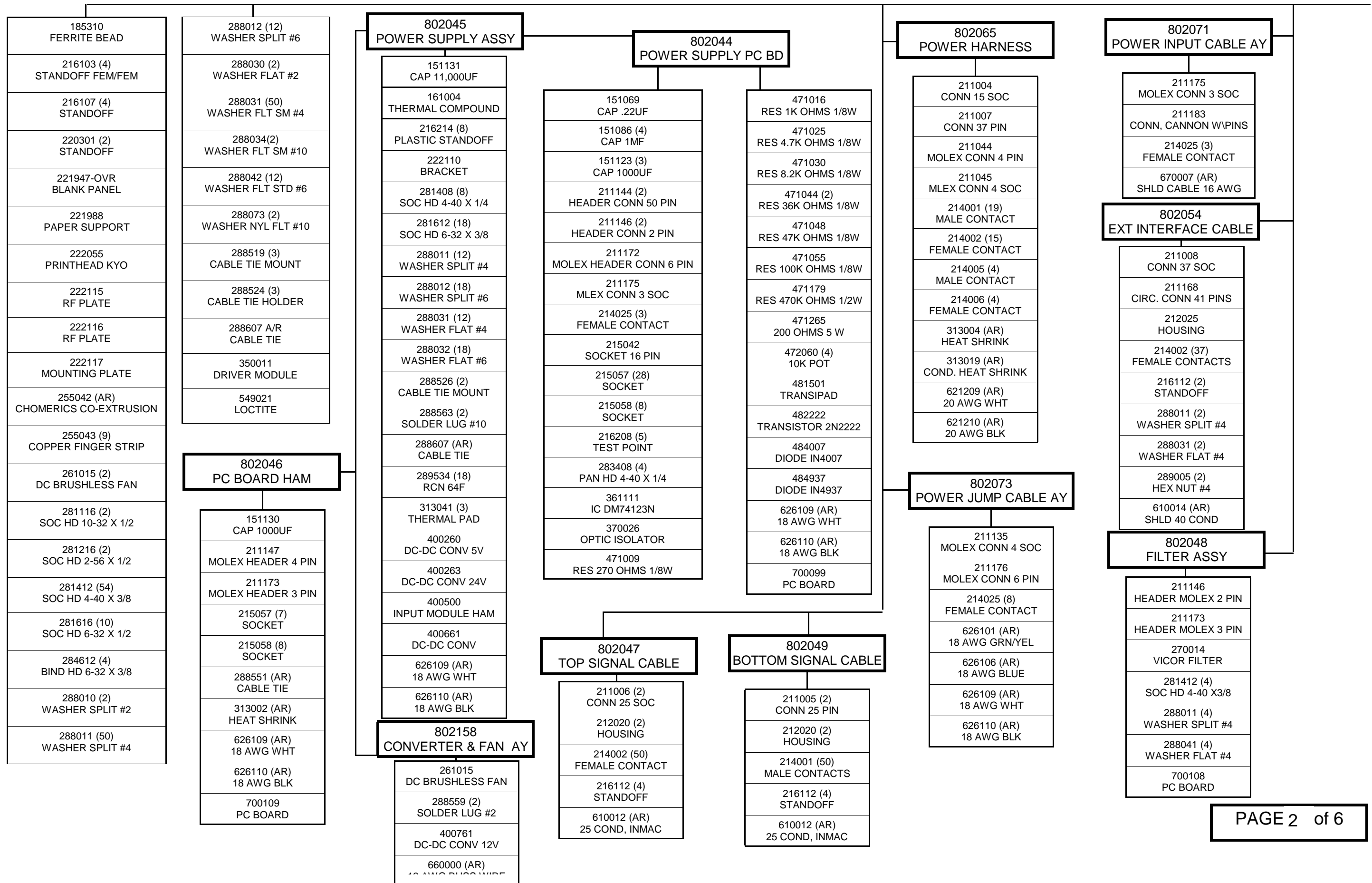
DRAWN BY: JUDE GARLINGTON      DATE: 7/27/2000

REV:J

SPARES & MISC	DESCRIPTION
	SMALL SPARES
ND-802120	DEPOT SPARES
801624	THERMAL FILM KIT
801561	THERMAL PAPER KIT

SCHEMATIC #	PART NO.	DESCRIPTION
900467	801977	CONTROL BOARD
900468	802068	MICRO BOARD
900437	D-801644	DIGITAL BOARD
900452	802045	POWER PC BOARD

802067 FINAL ASSY



802067  
FINAL ASSY (CONT)

9602

802060  
CONTROL PANEL AY

- 211044 MOLEX CONN 4 PIN
- 211045 MOLEX CONN 4 SOC
- 214005 (4) MALE CONTACT
- 214006 (4) FEMALE CONTACT
- 221874-OVR PANEL
- 242001 KNOB
- 242007 (2) KNOB
- 246513 (2) IND LAMP, WHT
- 246514 (3) IND LAMP, RED 6V
- 288524 CABLE TIE HOLDER
- 288558 SOLDER LUG #14
- 288564 SOLDER LUG #4
- 288607 (AR) CABLE TIE
- 313008 (AR) HEAT SHRINK
- 472025 10 OHM POT
- 472064 10K POT
- 512035 SWITCH, ROTARY
- 516516 (3) SWITCH
- 516517 SWITCH
- 621310 (AR) 22 AWG BLK
- 621410 (AR) 24 AWG BLK
- 660004 20 AWG BUSS WIRE

216203  
TERMINAL BD

802059  
PANEL CABLE AY

- 211008 CONN 37 SOC
- 212025 HOUSING
- 213004 SCREW LOCK
- 214002 (37) FEMALE CONTACT
- 610014 (AR) SHLD 40 COND

801689  
DIMMER ASSY

- 215044 (2) SOCKET
- 221953 BRACKET
- 280416 (2) PAN HD 4 X 1/2
- 281616 (4) SOC HD 6-32 X 1/2
- 288010 (2) WASHER SPLIT #2
- 288011 (2) WASHER SPLIT #4
- 288012 (4) WASHER SPLIT #6
- 288030 (2) WASHER FLAT #2
- 288032 (4) WASHER FLAT #6
- 288041 (2) WASHER FLAT #4
- 288050 (4) WASHER NYLON #4
- 289001 (2) HEX NUT #2
- 289005 (2) HEX NUT #4
- 313039 (2) INSULATOR
- 471119 RES 1K OHMS 1/2W
- 471255 RES 5 OHMS 5W
- 483771 (2) TRANSISTOR 2N3771
- 221963 TERMINAL BD

802157  
CIRCUIT BREAKER AY

- 211134 MOLEX CONN 4 PIN
- 214024 (4) MALE CONTACTS
- 515062 CIRCUIT BREAKER
- 626109 (AR) 18 AWG WHT
- 626110 (AR) 18 AWG BLK

802072  
DIMMER BAR ASSY

- 211044 MOLEX CONN 4 PIN
- 214005 (4) MALE CONTACT
- 222118 SIDE PLATE
- 222119 HOLDER
- 222120 WINDOW
- 246028 (10) LAMPS
- 281224 (4) SOC HD 2-32 X 3/4
- 283310 (4) FLAT HD 4-40 X 1/4
- 313004 (AR) HEAT SHRINK
- 313008 (AR) HEAT SHRINK
- 621209 (AR) 20AWG WHT

802074  
PANEL POWER CABLE

- 211135 MOLEX CONN 4 SOC
- 211174 MOLEX CONN 2 SOC
- 211175 MOLEX CONN 3 SOC
- 214025 (8) FEMALE CONTACTS
- 670007 (AR) SHLD 16 AWG

802062  
MAIN CABLE

- 211003 CONN 15 PIN
- 211005 CONN 25 PIN
- 211006 CONN 25 SOC
- 211007 CONN 37 PIN
- 211135 MOLEX CONN 4 SOC
- 211155 JACK
- 211166 HEADER CONN 60 PIN
- 211174 MOLEX CONN 2 SOC
- 211175 (2) MOLEX CONN 3 SOC
- 214001 (58) MALE CONTACT
- 214002 (25) FEMALE CONTACT
- 214019 (60) HEADER CONTACT
- 214025 (12) FEMALE CONTACT

- 216050 CRIMP LUG #4
- 220301 (4) STANDOFF
- 221985 CONN PLATE
- 288011 (2) WASHER SPLIT #4
- 288031 (2) WASHER FLAT #4
- 288607 (AR) CABLE TIE
- 289005 (2) HEX NUT #4
- 621209 (AR) 20 AWG WHT
- 621210 (AR) 20 AWG BLK
- 621409 (AR) 24 AWG WHT
- 621410 (AR) 24 AWG BLK
- 626109 (AR) 18 AWG WHT
- 626110 (AR) 18 AWG BLK

802068  
MICRO BD

- 171044 MICRO BD
- 201256 IC
- 202056 IC RAM
- 211182 (2) CONN HEADER LATCHING
- 216210 (3) SPRING SHUNT

802069  
PROGRAM

- 202512 EPROM

802063  
PRINTHEAD CABLE AY

- 211005 CONN 25 PIN
- 211006 CONN 25 SOC
- 211008 CONN 37 SOC
- 211045 (2) MOLEX CONN 4 SOC
- 211123 (2) HEADER CONN 50 PIN
- 211185 (2) CONN 10 PIN RECEPT
- 214001 (14) MALE CONTACT
- 214002 (42) FEMALE CONTACT
- 214006 (8) FEMALE CONTACT
- 214019 (108) HEADER CONTACT
- 220301 (2) STANDOFF
- 222048 CONN PLATE
- 222072 (2) HEADER CONN 26 PIN
- 288011 (2) WASHER SPLIT #4
- 288031 (2) WASHER FLAT #4
- 289005 (2) HEX NUT #4
- 621209 (AR) 20 AWG WHT
- 621210 (AR) 20 AWG BLK
- 621409 (AR) 24 AWG WHT
- 621410 (AR) 24 AWG BLK

801644  
INTERFACE BD

- 151013 (16) CAP .01UF
- 151031 CAP 47PF
- 151032 CAO 22PF
- 151083 (6) CAP 1.0UF
- 201254 IC
- 202265 IC RAM
- 211160 HEADER LATCHING
- 215042 (11) SOCKET 16 PIN
- 215043 SOCKET 24 PIN W
- 215051 (2) SOCKET 20 PIN
- 215059 SOCKET 28 PIN
- 215068 (2) SOCKET 68 PIN
- 216208 TEST POINT JUMPER
- 231014 CRYSTAL 5.24288 MHZ
- 255037 EJECTOR HANDLE
- 365172 (2) IC 75172

- 365173 (3) IC 75173
- 384060 IC 74HC4060
- 384174 IC 74LS174
- 384245 (2) IC 74LS245
- 384257 (2) IC 74HC257
- 384367 IC 74LS367
- 384592 IC 74HC592
- 471016 RES 1K OHMS 1/8W
- 471055 RES 100K OHMS 1/8W
- 473017 (2) RES ARRAY 10K
- 516506 DIP SWITCH
- 700091 PC BD

801610  
DECODE PAL

- 203810 PAL

801765  
TIMING PAL

- 203810 PAL

802067  
FINAL ASSEMBLY (CONT)

801977  
CONTROL BD

- 151028 (40) CAP .01UF
- 151083 CAP 1.0UF
- 151088 (4) CAP 4.7UF
- 200828 IC ADC 8 BIT
- 201254 IC
- 202120 (2) IC 7C128A
- 211077 CONN HEADER 40 PIN
- 211179 CONN HEADER 60 PIN
- 215042 (4) SOCKET 16 PIN
- 215043 SOCKET 24 PIN W
- 215046 (4) SOCKET 14 PIN
- 215051 (10) SOCKET 20 PIN
- 215052 SOCKET 28 PIN W
- 215053 (13) SOCKET 24 PIN
- 215059 (4) SOCKET 28 PIN
- 232823 OSC 33MHz
- 245011 (4) LED, RED
- 245012 LED, GREEN
- 255037 EJECTOR HANDLE
- 364138 (2) IC 74F138
- 364432 IC 74F32
- 364438 IC 74F38

- 364538 IC 74F538
- 384244 IC 74LS244
- 384245 (4) IC 74LS245
- 384273 (2) IC 74LS273
- 384367 (2) IC 74LS367
- 384374 (2) IC
- 384652 (4) IC 74LSTTL
- 390490 IC
- 471032 RES 10K OHMS 1/8 W
- 471216 RES 1 OHMS 1/4 W
- 471409 RES 2.94K OHMS 1/8 W
- 471410 RES 11.8K OHMS 1/8 W
- 471415 (4) RES 2K OHMS 1/8 W
- 471416 (4) 6.49K OHMS 1/8 W
- 472060 POT 10K
- 473015 RES ARRAY 10k
- 473016 (4) RES ARRAY 1K
- 473017 (4) RES ARRAY 10K
- 489000 IC MOSFET
- 700101 PC BD

801913  
FAST PAL

203330

801914  
RAM PAL

203210

801915  
ADDRESS PAL

203610

801916  
SHIFT PAL

203209

801917  
SHADE PAL

203209

801918 (2)  
COMP PAL

203331

801919  
DEC PAL

203209

801920  
CHART PAL

203331

801921  
MISC PAL

203610

801922  
STROBE PAL

203209

802070  
POWER SHIELD

- 222111 POWER SHIELD
- 255054 (AR) EXTRUDED CHANNEL
- 281412 (2) SOC HD 4-40 X 3/8
- 288011 (2) WASHER SPLIT #4
- 288031 (2) WASHER FLAT SM #4
- 288524 (AR) CABLE TIE HOLDER
- 288607 (AR) CABLE TIE

801975  
P-HEAD LOCK CABLE

- 211044 MOLEX CONN 4 PIN
- 214005 (4) MALE CONTACT
- 288607 (AR) CABLE TIE
- 313004 (AR) HEAT SHRINK
- 313007 (AR) HEAT SHRINK
- 513008 MICRO SWITCH
- 621409 (AR) 24 AWG WHT
- 621410 (AR) 24 AWG BLK
- 641410 (AR) 24 AWG TW/PR BLK/WHT

801588  
TURRET ASSY

- 216070 (3) TURRET
- 700088 PC BD

802053  
INTERFACE INT CABLE AY

- 211007 CONN 37 PIN
- 211105 HEADER CONN 40 PIN
- 214001 (36) MALE CONTACT
- 214019 (36) HEADER CONTACTS
- 288607 (AR) CABLE TIE
- 621409 (AR) 24 AWG WHT
- 621410 (AR) 24 AWG BLK

802074  
PANEL POWER CABLE

- 211135 MOLEX CONN 4 SOC
- 211174 MOLEX CONN 2 SOC
- 211175 MOLEX CONN 3 SOC
- 214025 (8) FEMALE CONTACT
- 670007 (AR) SHIELDED WIRE 16 AWG

801582  
PAPER SENSOR AY

- 215039 (4) SOCKETS
- 281412 (2) SOC HD 4-40 X 3/8
- 288011 (2) WASHER SPLIT #4
- 288031 (4) WASHER FLAT #4
- 289050 (2) HEX NUT 4-40 X 1/4
- 370025 OPTIC SENSOR
- 471009 RES 270 OHMS 1/8 W
- 471016 RES 1K OHMS 1/8 W
- 471055 RES 100K OHMS 1/8 W
- 480106 MOS FET

802306  
TU DRIVE AY

- 222182 TU BRACKET
- 281412 (4) SOC HD 4-40 X 3/8
- 288011 (4) WASHER SPLIT #4
- 288031 (4) WASHERFLAT #4

802307  
TU MOTOR AY

- 211156 SWCRAFT PLUG
- 222044 ADAPTER PLATE
- 283372 (3) FLAT HD 4-40 X 1/4
- 288647 SCREW CLAMP
- 289532 (4) RCN 64F
- 313004 (AR) HEAT SHRINK
- 350014 DC MOTOR
- 670005 (AR) BELDEN TWINAXLE

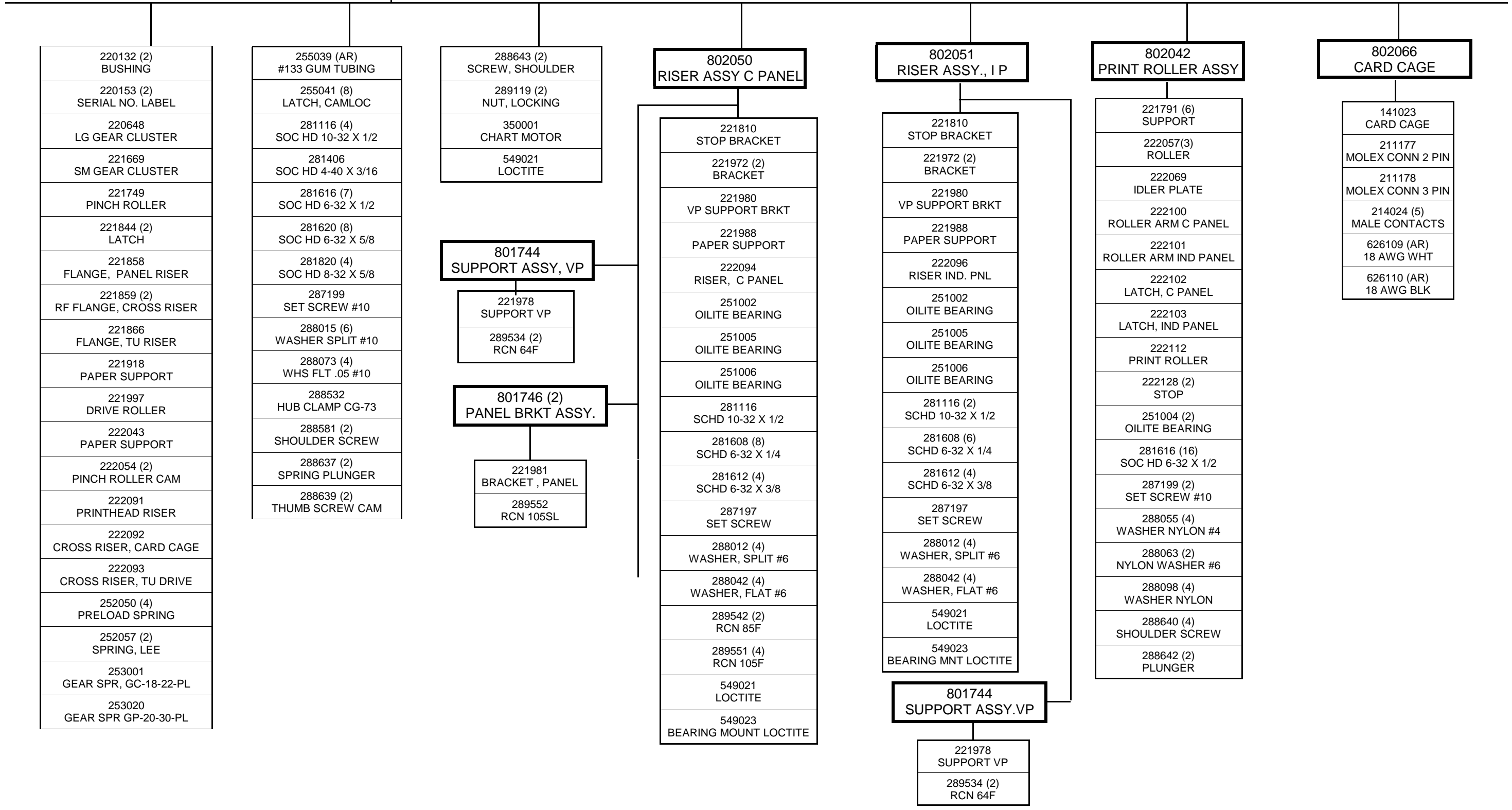
802454  
RF COVER ASSY

- 222022 RF COVER
- 222057 IDLER ROLLER
- 222276 (2) CAM
- 222277 (2) SUPPORT
- 281612 (4) SOC HD 6-32 X 3/8
- 288003 (4) WASHER INTERNAL #6
- 288102 (2) WASHER, NYLON
- 288651 (2) SHOULDER SCREW #10

802292  
TU DRIVE PC BOARD

- 151095 22UF
- 161004 THERMAL COMPOUND
- 211134 MOLEX CONN 4 PIN
- 211178 MOLEX CONN 3 PIN
- 214024 (4) MALE CONTACTS
- 215022 SOCKET 8 PIN
- 281408 (2) SOC HD 4-40 X 1/4
- 288011 WASHER SPLIT #4
- 288031 (2) WASHER FLAT #4
- 288560 SOLDER LUG
- 288607 (AR) CABLE TIE
- 289516 RCN 43F
- 367555 IC
- 471016 RES 1K OHMS 1/8W
- 471032 RES 10K OHMS 1/8W
- 471046 RES 43K OHMS 1/8W
- 471090 RES 47 OHMS 1/2W
- 471110 RES 220 OHMS 1/2W
- 472110 5K TRIMPOT
- 480310 TRANS TIP31
- 480751 DIODE ZENER
- 481013 HEAT SINK
- 484004 DIODE
- 626109 (AR) 18 AWG WHT
- 626110 (AR) 18 AWG BLK
- 700113 PC BOARD

**MAIN FRAME ASSEMBLY 802052**



REV	DESCRIPTION	ECO
A	INCREASED WTY OF 216112 FROM 2 TO 4 ON 802047 AND 802049	1466
B	ADD 1-216050 TO 802062/ ADD 1-288564 AND 660004 A/R TO 802060	1467
C	MOVED 222115 FROM 802062 AND 222116 FROM 802063 TO 802067	1468
D	CHANGED 471031 TO 471032/ ADDED 472034, 288560, 471034 1 EACH/INCREASED 281408 + 288031 FROM 1 TO 2 ON 802292 TU DRIVE ASSY	1522
E	DELETED 802300 PAPER SUPPORT AND ADDED 1 221988 TO FINAL ASSY	1523
F	CHANGED 472002 POT TO 472064	1532
G	ADDED 220301 (2)	1538
H	MADE CHANGES TO 802292 TU DRIVE PC BOARD	1547
I	ADDED NEW RF COVER ASSY	1549
J	CHANGED RUBBER STRIP ON CASE	1562 7/27/00